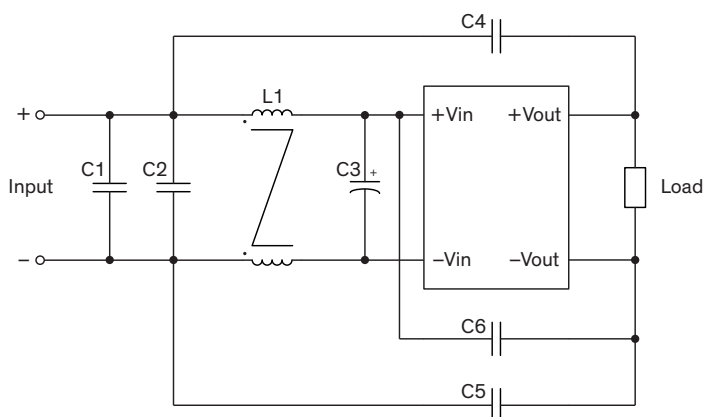


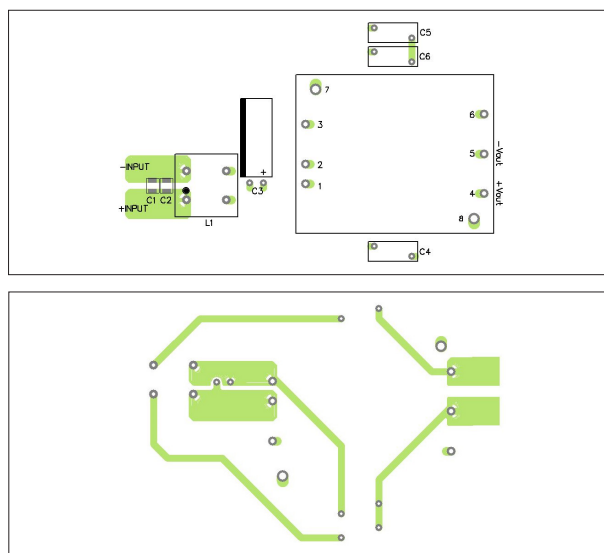
### EMI Consideration

Suggested filter to comply with EN 55032 Radiated Emissions Class A limits

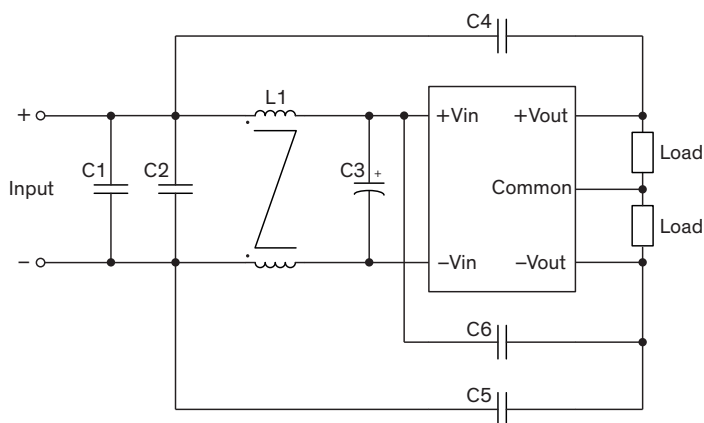
#### Single output models



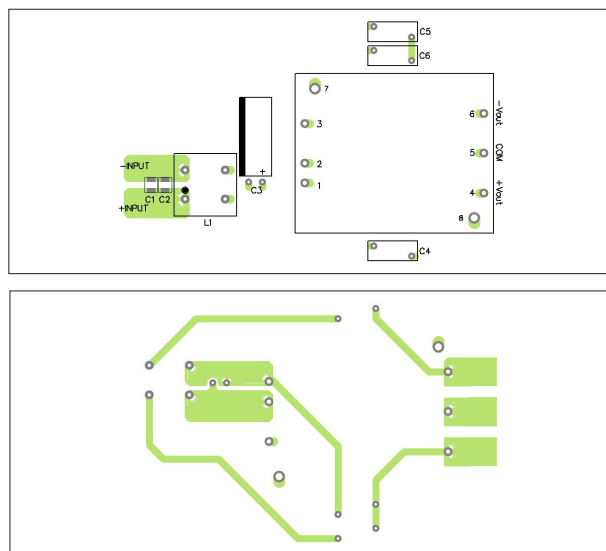
#### PCB layout suggestion



#### Dual output models



#### PCB layout suggestion



### Suggested components to comply with EN 55032 Radiated Emissions Class A limits

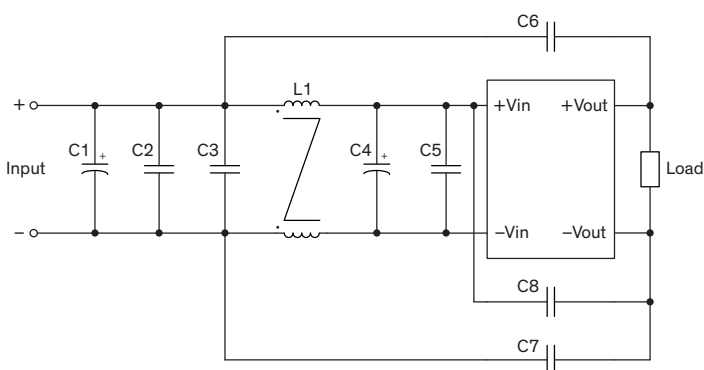
Model	C1	C2	C3	C4	C5	C6	L1
TEN 60-24xxWIR	-	10 $\mu$ F / 50 V 1210 MLCC	-	1000 pF Y1	-	-	398 $\mu$ H TCK-177
TEN 60-48xxWIR	2.2 $\mu$ F / 100 V 1210 MLCC	2.2 $\mu$ F / 100 V 1210 MLCC	100 $\mu$ F / 100 V ZLH	330 pF Y1	680 pF Y1	330 pF Y1	398 $\mu$ H TCK-177

TCK-177 datasheet: [www.tracopower.com/overview/tck-177](http://www.tracopower.com/overview/tck-177)

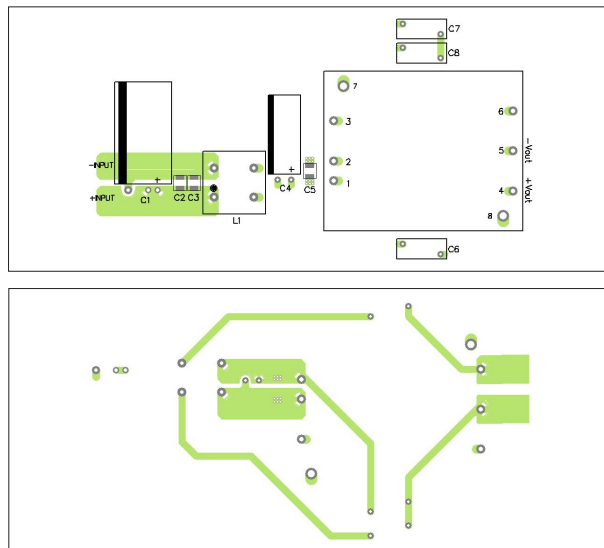
### EMI Consideration

Suggested filter to comply with EN 55032 Radiated Emissions Class A limits

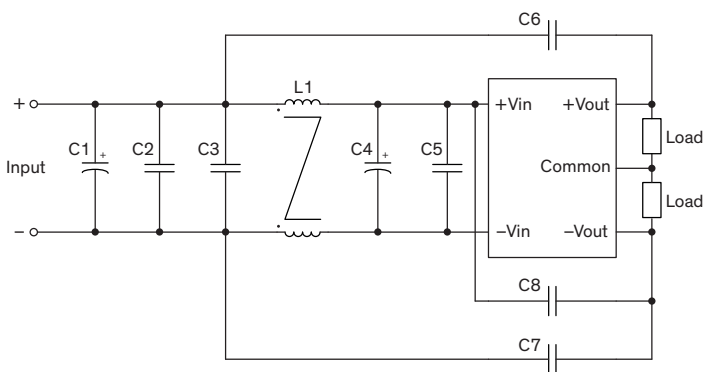
#### Single output models



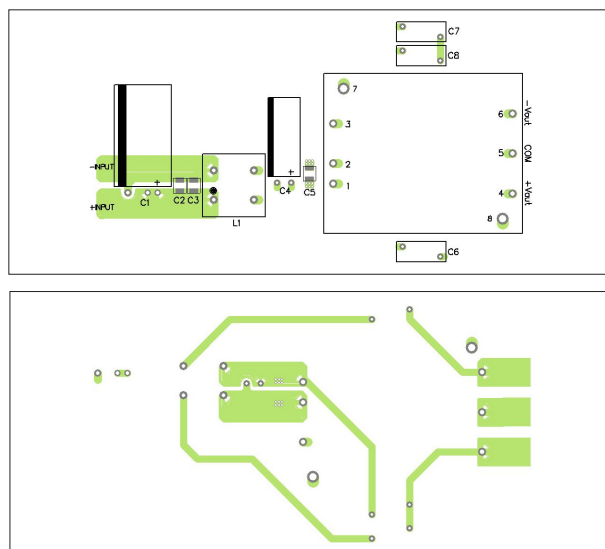
#### PCB layout suggestion



#### Dual output models



#### PCB layout suggestion



### Suggested components to comply with EN 55032 Radiated Emissions Class A limits

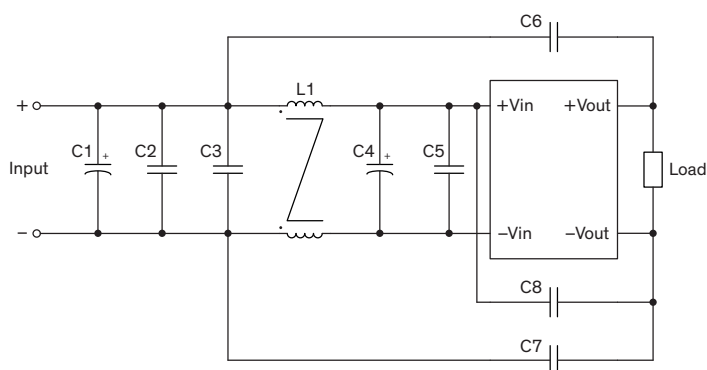
Model	C1, C4	C2, C3, C5	C6	C7	C8	L1
TEN 60-72xxWIR	47 $\mu$ F / 200 V KXJ	1 $\mu$ F / 250 V 1812 MLCC	1000 pF Y1	2200 pF Y1	220 pF Y1	500 $\mu$ H TCK-169

TCK-169 datasheet: [www.tracopower.com/overview/tck-169](http://www.tracopower.com/overview/tck-169)

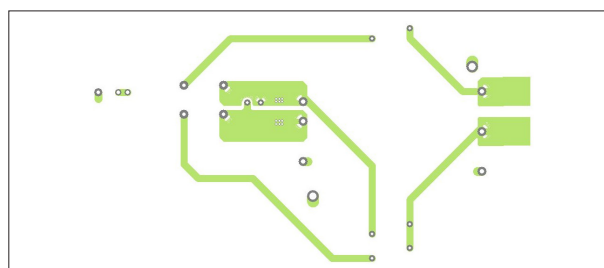
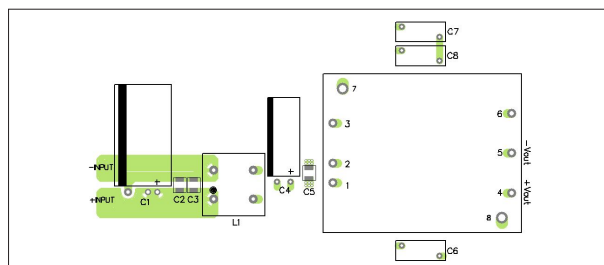
### EMI Consideration

#### Suggested filter to comply with EN 55032 Radiated Emissions Class B limits

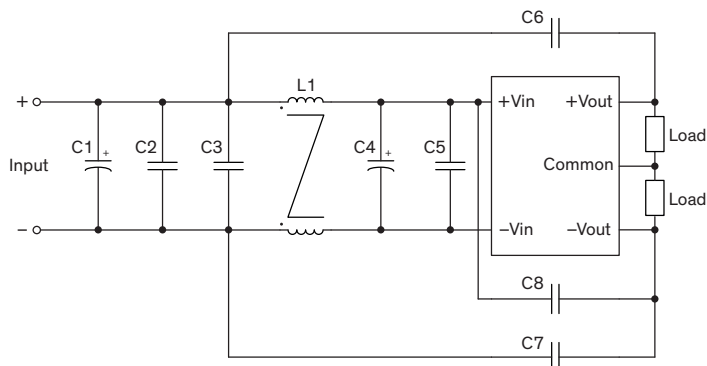
##### Single output models



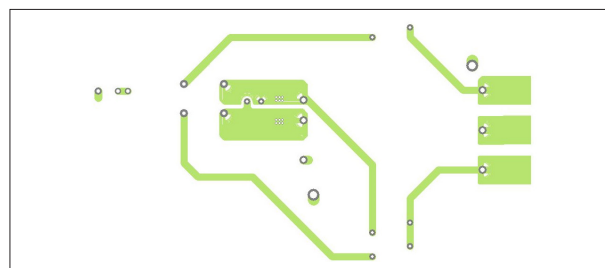
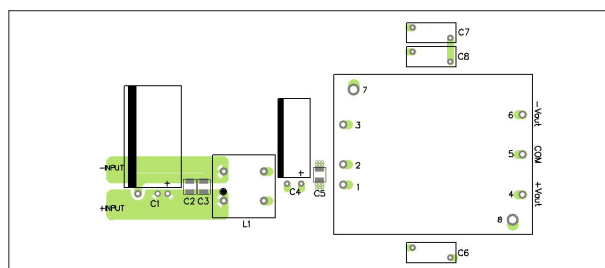
##### PCB layout suggestion



##### Dual output models



##### PCB layout suggestion



#### Suggested components to comply with EN 55032 Radiated Emissions Class B limits

Model	C1	C2	C3	C4	C5	C6	C7	C8	L1
TEN 60-24xxWIR	-	10 $\mu$ F 50 V 1210 MLCC	-	270 $\mu$ F 50 V ZLH	-	1000 pF Y1	470 pF Y1	680 pF Y1	398 $\mu$ H TCK-177
TEN 60-48xxWIR	220 $\mu$ F 100 V KY	2.2 $\mu$ F 100 V 1210 MLCC	2.2 $\mu$ F 100 V 1210 MLCC	100 $\mu$ F 100 V ZLH	2.2 $\mu$ F 100 V 1210 MLCC	1000 pF Y1	1000 pF Y1	680 pF Y1	398 $\mu$ H TCK-177
TEN 60-72xxWIR	150 $\mu$ F 200 V KXJ	1 $\mu$ F 250 V 1812 MLCC	1 $\mu$ F 250 V 1812 MLCC	47 $\mu$ F 200 V KXJ	1 $\mu$ F 250 V 1812 MLCC	1000 pF Y1	2200 pF Y1	470 pF Y1	500 $\mu$ H TCK-169

TCK-169 datasheet: [www.tracopower.com/overview/tck-169](http://www.tracopower.com/overview/tck-169)

TCK-177 datasheet: [www.tracopower.com/overview/tck-177](http://www.tracopower.com/overview/tck-177)