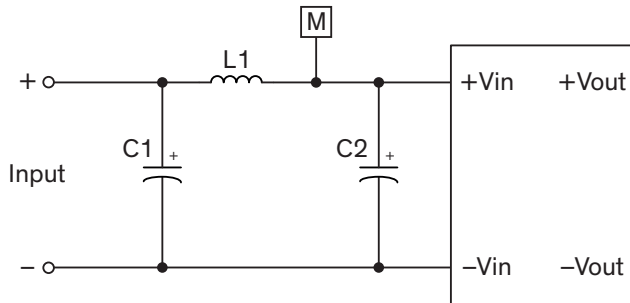


## Reflected ripple current

### Input filter to reduce reflected ripple current



M = Current probe

#### TOS 06 / TOS 10 / TOS 16 series:

C1 = 1'000  $\mu$ F, ESR < 0.1 Ohm

C2 = 2x 100  $\mu$ F

L1 = 1  $\mu$ H

#### TOS 30 series:

C1 = 220  $\mu$ F, ESR < 0.1 Ohm

C2 = 150  $\mu$ F min.

L1 = 1  $\mu$ H