

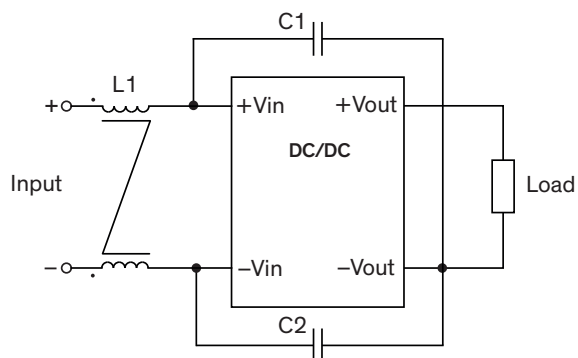
## EMI Consideration

### Suggested filter to comply with EN 55032 Conducted Emissions Class A limits

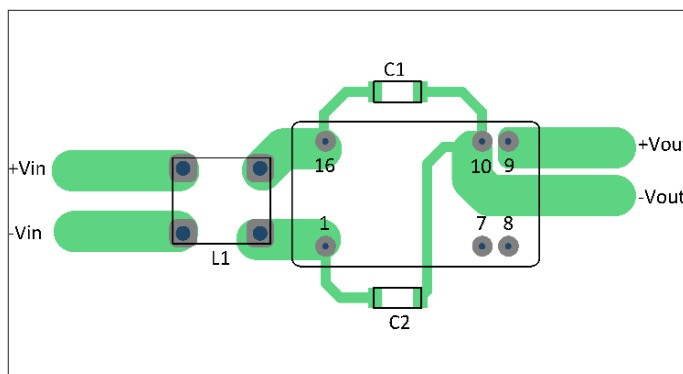
TEL 10 series meet EN 55032 Conducted Emissions Class A without external components.

### Suggested filter to comply with EN 55032 Radiated Emissions Class A limits

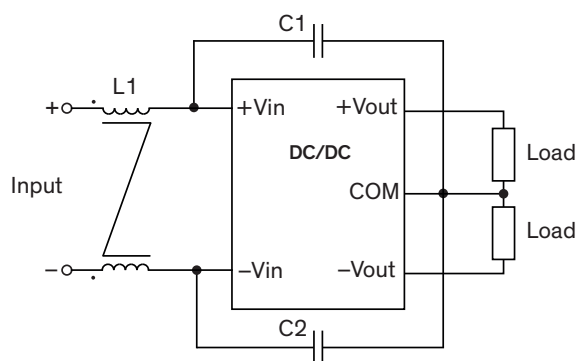
#### Single output models



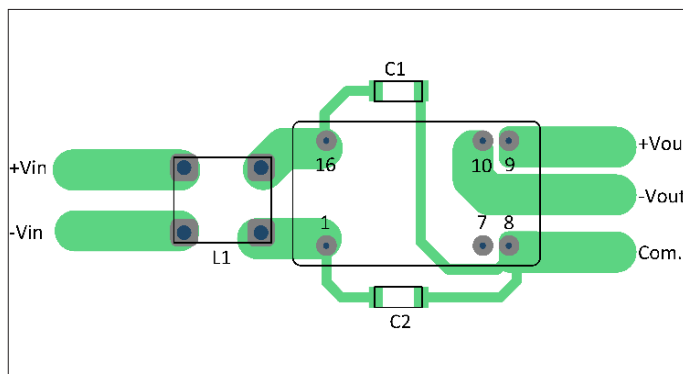
#### PCB layout suggestion



#### Dual output models



#### PCB layout suggestion



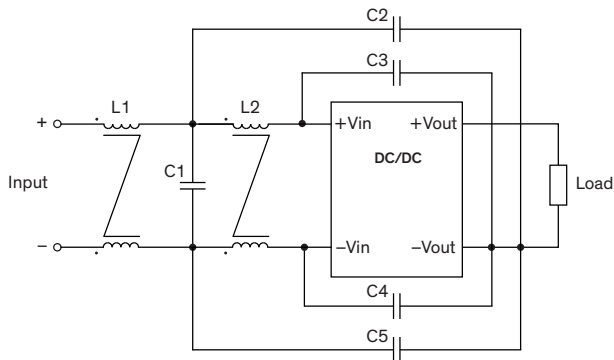
### Suggested components to comply with EN 55032 Radiated Emissions Class A limits

Model	L1	C2, C3
TEL 10-xxxxWI	30 $\mu$ H / 1.4 A / 744273222	100 pF / 2 kV / 1808

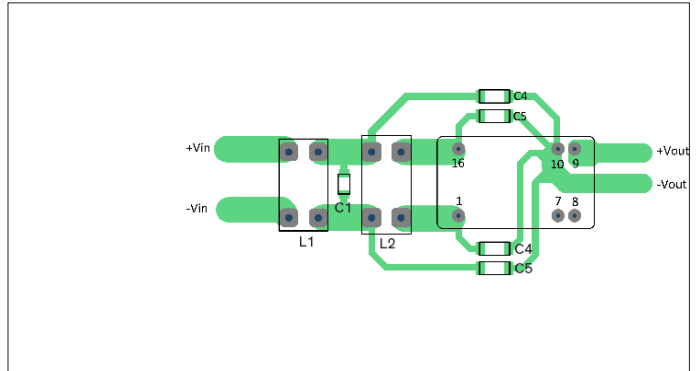
### EMI Consideration

#### Suggested filter to comply with EN 55032 Radiated and Conducted Emissions Class B limits

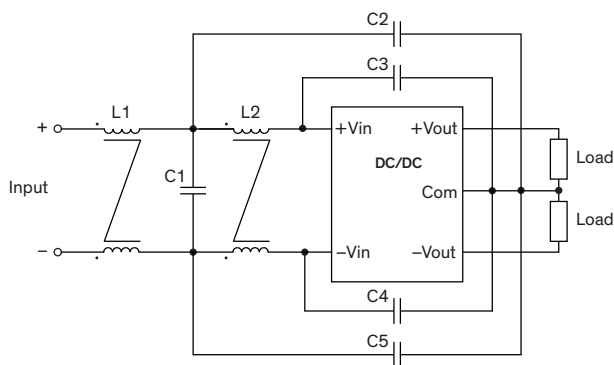
##### Single output models



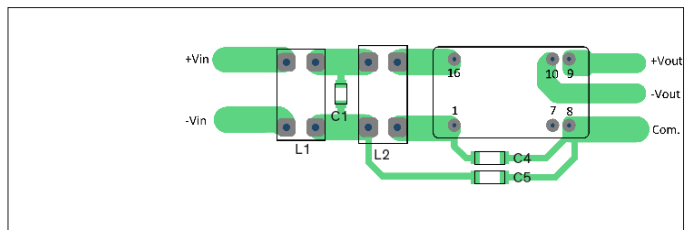
##### PCB layout suggestion



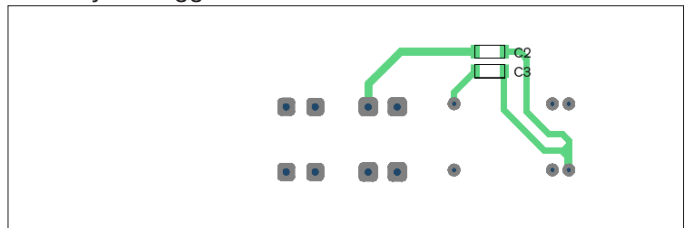
##### Dual output models



##### PCB layout suggestion Top



##### PCB layout suggestion Bottom



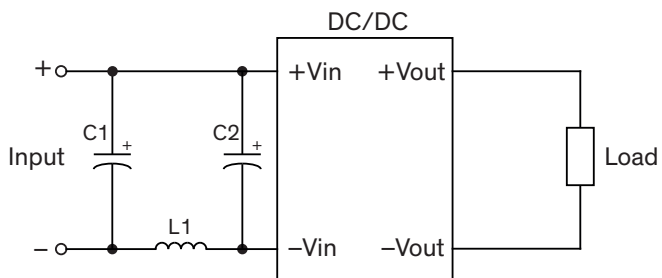
#### Suggested components to comply with EN 55032 Radiated and Conducted Emissions Class B limits

Model	L1	C1	L2	C2, C5	C3, C4
TEL 10~xxxxWI	1 mH / 2.5 A 7448012501	2.2 $\mu$ F / 100 V 1206	0.4 mH / 4.5 A 7448014501	100 pF / 2 kV / 1808	470 pF / 2 kV / 1808

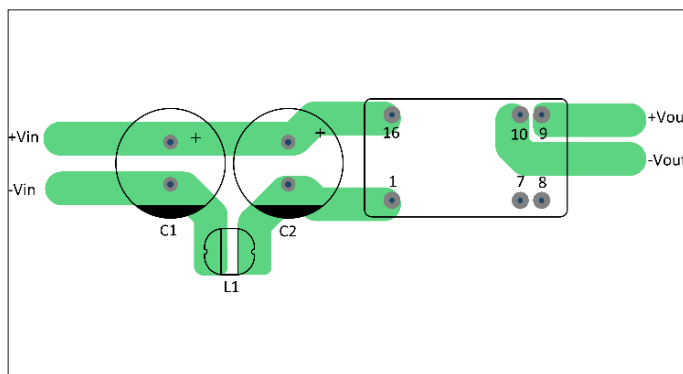
### EMS Consideration

#### Suggested filter to comply with EN 55032 EFT (Burst) & Surge, perf. criteria A

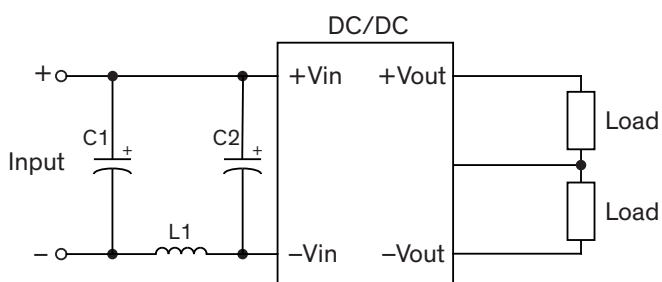
##### Single output models



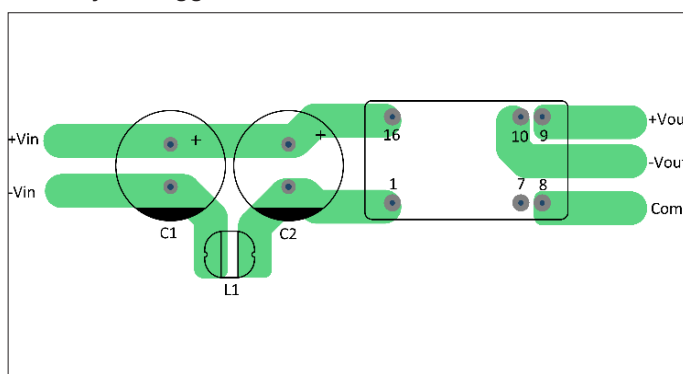
##### PCB layout suggestion



##### Dual output models



##### PCB layout suggestion



#### Suggested components to comply with EFT (Burst) & Surge, perf. criteria A

Model	C1	L1	C2
TEL 10-24xxWI	560 $\mu$ F / 50 V / KY series	10 $\mu$ H / 2.2 A / 74477410	560 $\mu$ F / 50 V / KY series
TEL 10-48xxWI	-	-	560 $\mu$ F / 100 V / KY series