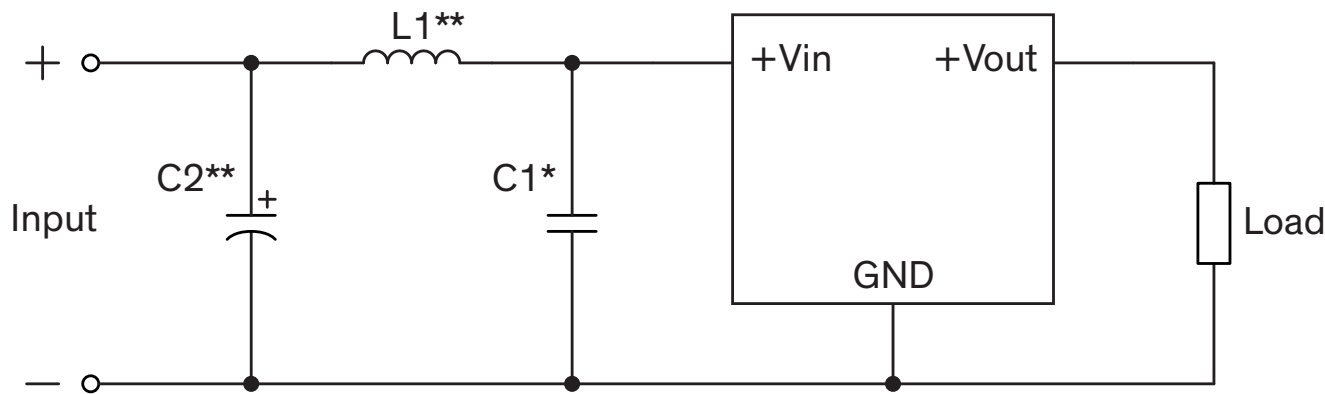


Recommended Input Filter

- * It is recommended to apply an external input capacitor
- ** If the input is switched electromechanically, it is recommended to apply C2 and L1 to avoid voltage transients



Recommended Input Filter			
Model	C1*	C2**	L1**
TSR 0.6-xxxxWI TSR 1-xxxxWI	2.2 μ F / 100 V	33 μ F / 100 V Electrolytic capacitor	4.7 μ H