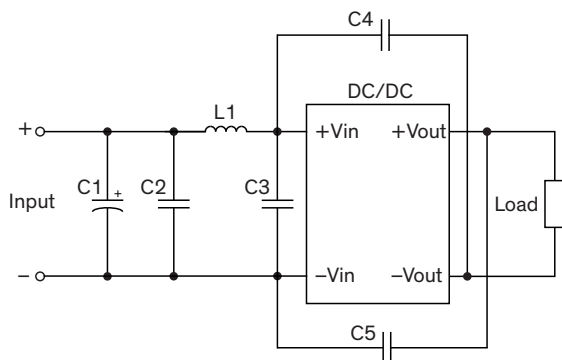


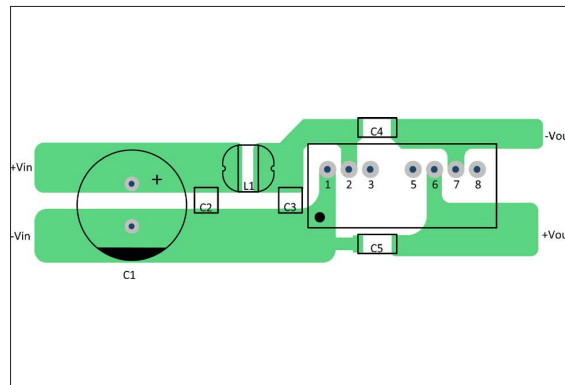
### EMI Consideration

Suggested filter to comply with EN 55032 Conducted and Radiated Emissions Class A, EFT & Surge

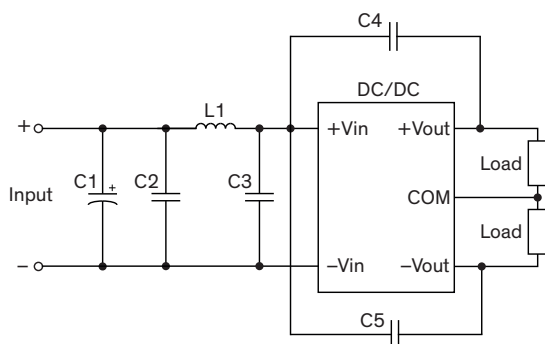
#### Single output models



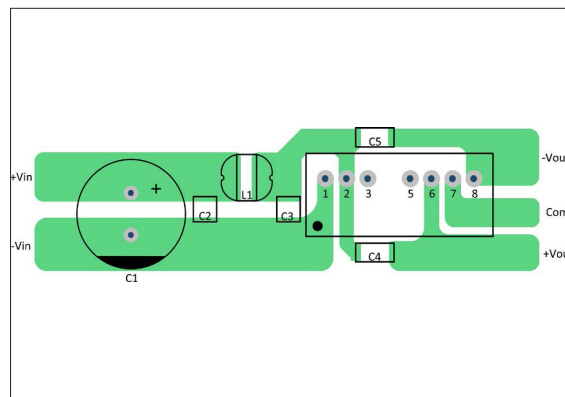
#### PCB layout suggestion



#### Dual output models



#### PCB layout suggestion

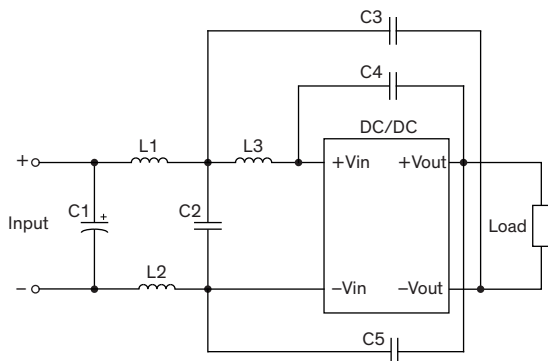


### Suggested components to comply with EN 55032 Conducted and Radiated Emissions Class A, EFT & Surge

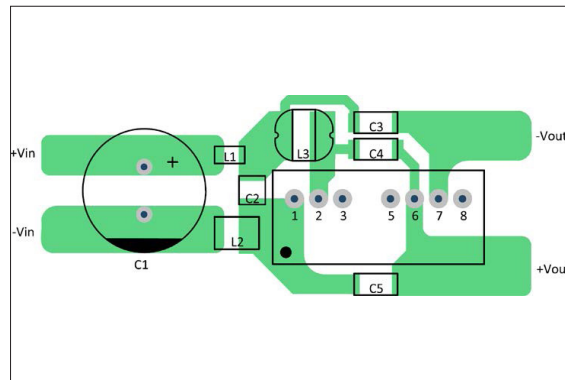
Model	C1	C2	L1	C3	C4, C5
<b>TMR 4-121x</b>	330 $\mu$ F / 50 V chemi-con KY	4.7 $\mu$ F / 25 V 1210 X5R	68 $\mu$ H / 0.64 A 744774168	4.7 $\mu$ F / 25 V 1210 X5R	220 pF / 2 kV 1808 X7R
<b>TMR 4-122x</b>	330 $\mu$ F / 50 V chemi-con KY	4.7 $\mu$ F / 25 V 1210 X5R	10 $\mu$ H / 1.7 A 7447745100	4.7 $\mu$ F / 25 V 1210 X5R	220 pF / 2 kV 1808 X7R
<b>TMR 4-241x</b>	330 $\mu$ F / 80 V chemi-con KY	4.7 $\mu$ F / 50 V 1210 X5R	68 $\mu$ H / 0.64 A 744774168	4.7 $\mu$ F / 50 V 1210 X5R	220 pF / 2 kV 1808 X7R
<b>TMR 4-242x</b>	330 $\mu$ F / 80 V chemi-con KY	4.7 $\mu$ F / 50 V 1210 X5R	4.7 $\mu$ H / 1.82 A 744773047	4.7 $\mu$ F / 50 V 1210 X5R	220 pF / 2 kV 1808 X7R
<b>TMR 4-481x</b>	330 $\mu$ F / 100 V chemi-con KY	4.7 $\mu$ F / 100 V 1210 X5R	100 $\mu$ H / 0.57 A 74477420	4.7 $\mu$ F / 100 V 1210 X5R	220 pF / 2 kV 1808 X7R
<b>TMR 4-482x</b>	330 $\mu$ F / 100 V chemi-con KY	4.7 $\mu$ F / 100 V 1210 X5R	4.7 $\mu$ H / 1.82 A 744773047	4.7 $\mu$ F / 100 V 1210 X5R	220 pF / 2 kV 1808 X7R

### Suggested filter to comply with EN 55032 Conducted and Radiated Emissions Class B, EFT & Surge

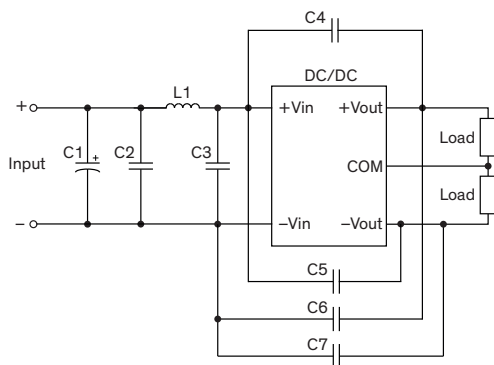
#### Single output models



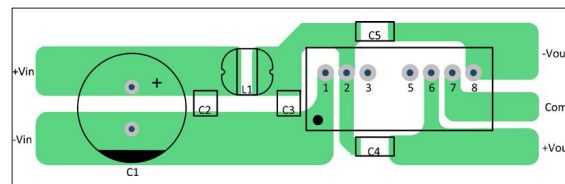
#### PCB layout suggestion



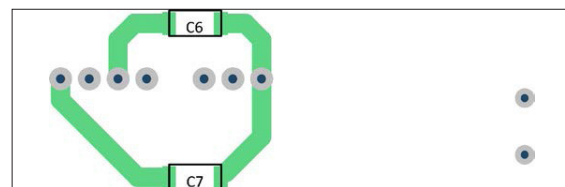
#### Dual output models



#### PCB layout suggestion (Top view)



#### PCB layout suggestion (Bottom view)



### Suggested components to comply with EN 55032 Conducted and Radiated Emissions Class B, EFT & Surge

Model	C1	L1	L2	C2	L3	C3	C4, C5	C6, C7
<b>TMR 4-121x</b>	330 $\mu$ F / 50 V chemi-con KY	4 A 74279252	4 A 74279252	22 $\mu$ F / 25 V 1206 X5R	68 $\mu$ H / 0.64 A 744774168	220 pF / 2 kV 1808 X7R	220 pF / 2 kV 1808 X7R	-
<b>TMR 4-122x</b>	330 $\mu$ F / 50 V chemi-con KY	10 $\mu$ H / 1.7A 744745100	-	4.7 $\mu$ F / 25 V 1210 X5R	-	4.7 $\mu$ F / 25 V 1210 X5R	220 pF / 2 kV 1808 X7R	220 pF / 2 kV 1808 X7R
<b>TMR 4-241x</b>	330 $\mu$ F / 80 V chemi-con KY	0.5 A 742792133	4 A 74279252	10 $\mu$ F / 50 V 1206 X5R	68 $\mu$ H / 0.64 A 744774168	220 pF / 2 kV 1808 X7R	220 pF / 2 kV 1808 X7R	-
<b>TMR 4-242x</b>	330 $\mu$ F / 80 V chemi-con KY	4.7 $\mu$ H / 1.82 A 744773047	-	4.7 $\mu$ F / 50 V 1210 X5R	-	4.7 $\mu$ F / 50 V 1210 X5R	220 pF / 2 kV 1808 X7R	220 pF / 2 kV 1808 X7R
<b>TMR 4-481x</b>	330 $\mu$ F / 100 V chemi-con KY	0.5 A 742792133	4 A 74279252	4.7 $\mu$ F / 100 V 1210 X5R	100 $\mu$ H / 0.57 A 744774168	220 pF / 2 kV 1808 X5R	220 pF / 2 kV 1808 X7R	-
<b>TMR 4-482x</b>	330 $\mu$ F / 100 V chemi-con KY	4.7 $\mu$ H / 1.82 A 744773047	-	4.7 $\mu$ F / 100 V 1210 X5R	-	4.7 $\mu$ F / 100 V 1210 X5R	220 pF / 2 kV 1808 X7R	220 pF / 2 kV 1808 X7R