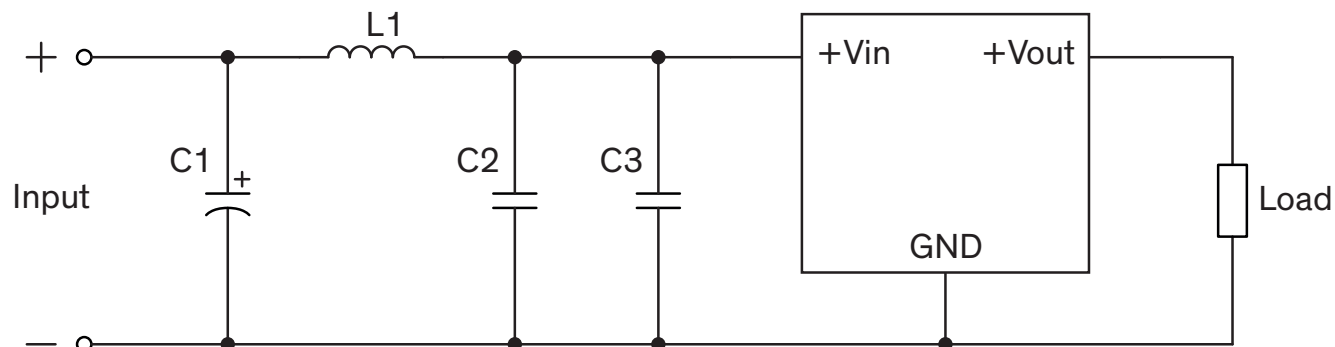
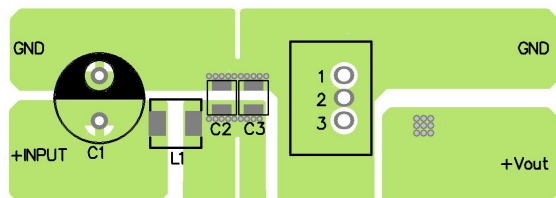


EMI Consideration

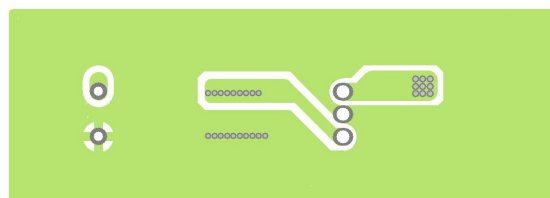
Suggested filter to comply with EN 55032 Conducted and Radiated Emissions Class A and Class B limits



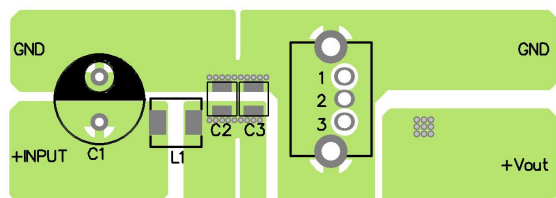
PCB TOP layout suggestion (TSR 0.6WI)



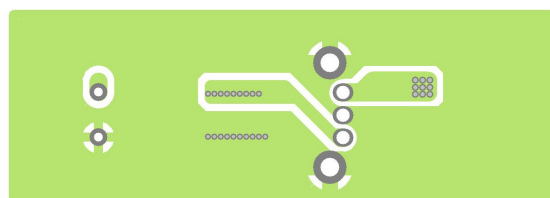
PCB BOT layout suggestion (TSR 0.6WI)



PCB TOP layout suggestion (TSR 1WI)



PCB BOT layout suggestion (TSR 1WI)



Suggested components to comply with EN 55032 Conducted and Radiated Emissions Class A limits

| Model | C1 | C2 | C3 | L1 |
|----------------------|---|----------------------------------|----|------------------------|
| TSR 0.6WI TSR 1WI | 33 μ F / 100 V Al Cap. Chemi-com KY | 2.2 μ F / 100 V 1210 MLCC | - | 4.7 μ H TCK-176 |

Suggested components to comply with EN 55032 Conducted and Radiated Emissions Class B limits

| Model | C1 | C2 | C3 | L1 |
|----------------------|---|----------------------------------|----------------------------------|------------------------|
| TSR 0.6WI TSR 1WI | 33 μ F / 100 V Al Cap. Chemi-com KY | 4.7 μ F / 100 V 1210 MLCC | 4.7 μ F / 100 V 1210 MLCC | 4.7 μ H TCK-176 |

TCK-176 datasheet: www.tracopower.com/overview/tck-176