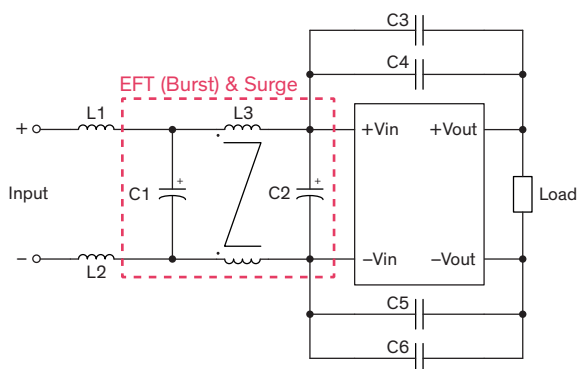


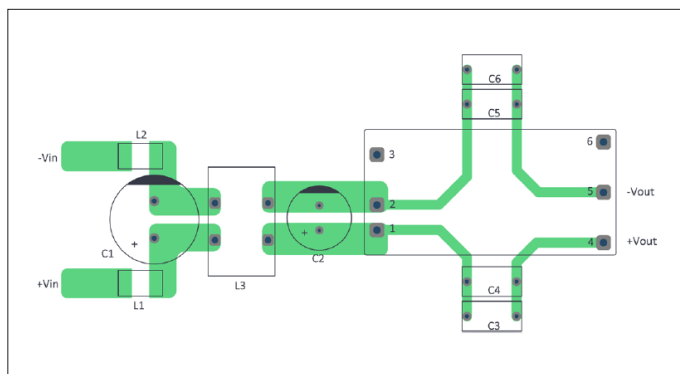
### EMI Consideration

Suggested filter to comply with EN 55032 Conducted and Radiated Emissions Class A limits

#### Single output models

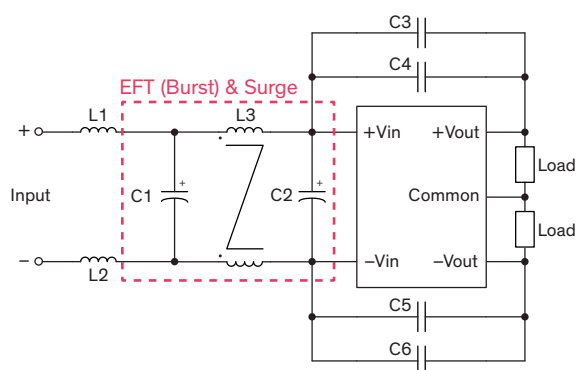


#### PCB layout suggestion

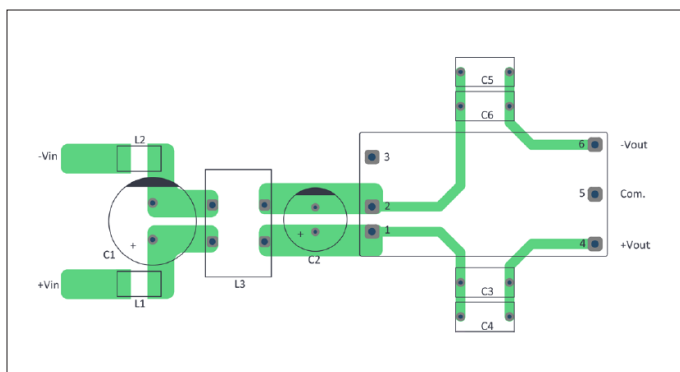


**Note** - The marked EFT (Burst) & Surge section can be used standalone.

#### Dual output models



#### PCB layout suggestion



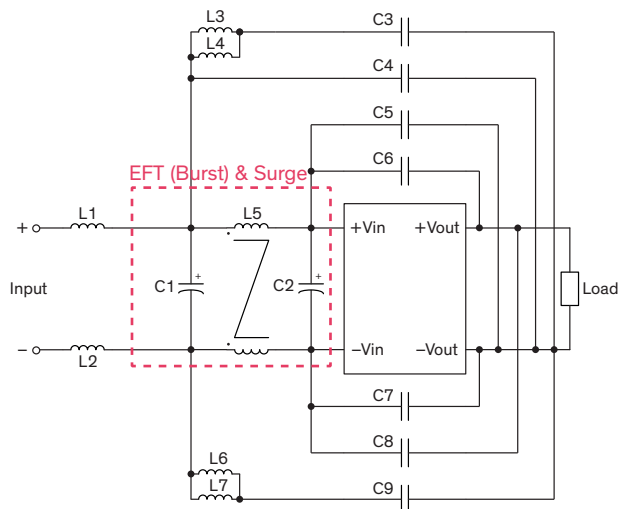
**Note** - The marked EFT (Burst) & Surge section can be used standalone.

### Suggested components to comply with EN 55032 Conducted and Radiated Emissions Class A limits

Model	L1, L2	C1	L3	C2	C3, C4, C5, C6
THR 40WI	580 $\Omega$ / 5 A / 12 m $\Omega$ 7427512	390 $\mu$ F / 200 V / KXJ	9 mH / 5 A 7448030509	47 $\mu$ F / 400 V / KMQ	4700 pF / Y1

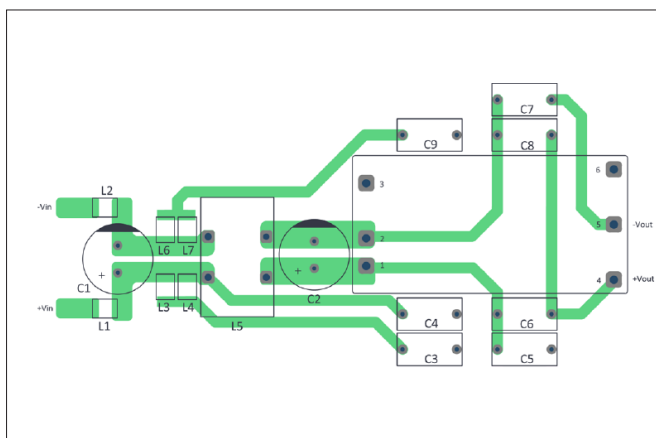
### Suggested filter to comply with EN 55032 Conducted and Radiated Emissions Class B limits

#### Single output models

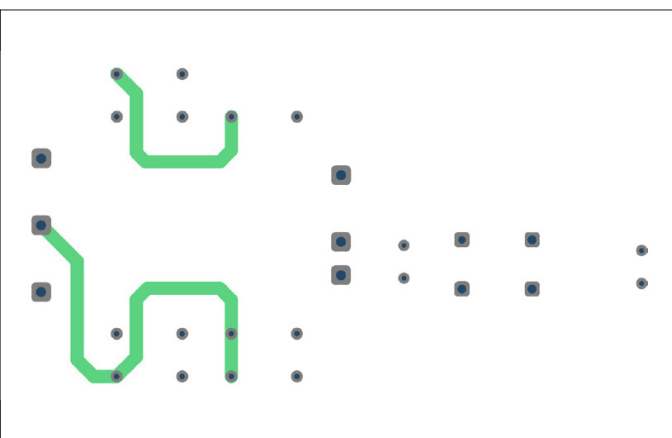


**Note** - The marked EFT (Burst) & Surge section can be used standalone.

#### PCB layout suggestion (Top View)



#### PCB layout suggestion (Bottom View)



### Suggested components to comply with EN 55032 Conducted and Radiated Emissions Class B limits

Model	L1	L2	L3, L4, L5, L6	L5	C1, C2	C3, C4, C9	C6, C7
THR 40-7211WI	150 $\Omega$ / 6 A	880 $\Omega$ / 4 A	785 $\Omega$ / 3 A	9mH / 5 A	180 $\mu$ F	100 pF	220 pF
THR 40-7212WI	20 m $\Omega$	25 m $\Omega$	50 m $\Omega$	7448030509	200 V	400 V	400 V
THR 40-7213WI	453215A151	453215K8814A	742792515		BXW	Y1	Y1

Note - C5, C8 are not required

Model	L3, L4, L6, L7	L5	C1, C2	C3, C4, C6, C9
THR 40-7215WI	785 $\Omega$ / 3 A / 50 m $\Omega$ 742792515	2.2 mH / 4 A 744823422	180 $\mu$ F / 200 V / BXW	100 pF / 400 V / Y1

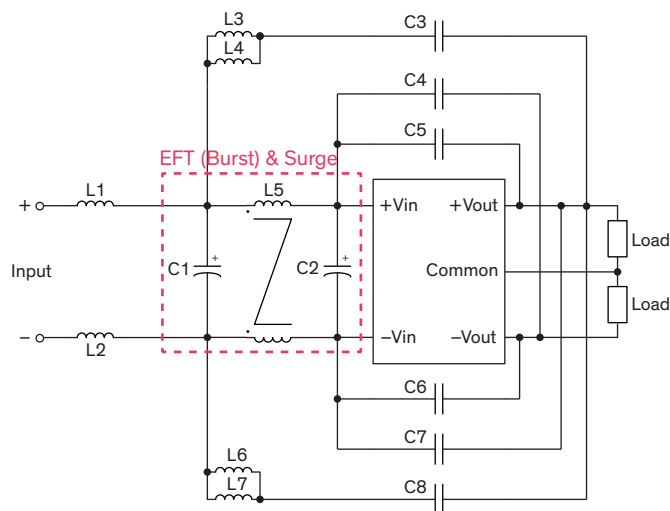
Note - L1, L2, C5, C7, C8 are not required

Model	L3, L4, L6, L7	L5	C1, C2	C3, C4, C9	C8	C5	C6
THR 40-72154WI	785 $\Omega$ / 3 A 50 m $\Omega$ 742792515	2.2 mH / 4 A 744823422	180 $\mu$ F / 200 V BXW	100 pF / 400 V Y1	470 pF / 400 V Y1	220 pF / 400 V Y1	330 pF / 400 V Y1

Note - L1, L2, C7 are not required

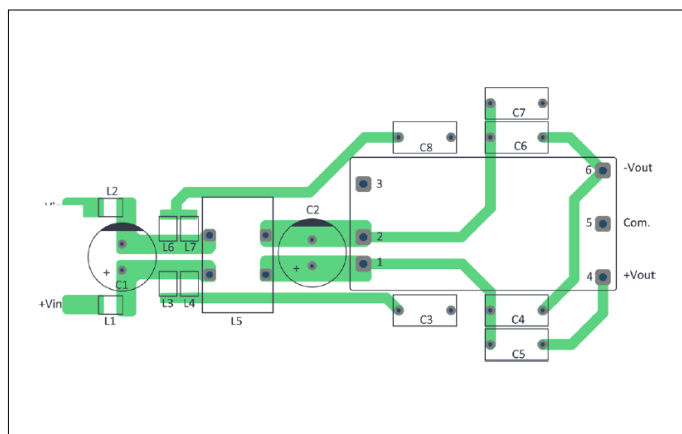
### Suggested filter to comply with EN 55032 Conducted and Radiated Emissions Class B limits

#### Dual output models

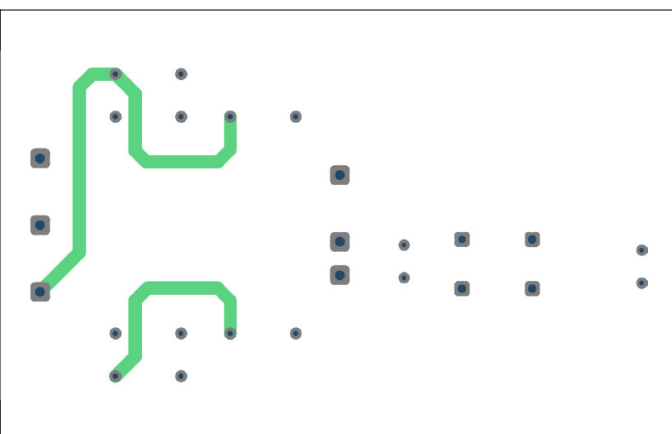


**Note** - The marked EFT (Burst) & Surge section can be used standalone.

#### PCB layout suggestion (Top View)



#### PCB layout suggestion (Bottom View)



### Suggested components to comply with EN 55032 Conducted and Radiated Emissions Class B limits

Model	L1, L2	L3, L4, L6, L7	L5	C1, C2	C3, C8	C4, C7	C5	C6
THR 40-7222WI	880 $\Omega$ / 4 A 25 m $\Omega$	785 $\Omega$ / 3 A 50 m $\Omega$	9 mH / 5 A	180 $\mu$ F 200 V BXW	100 pF 400 V Y1	220 pF 400 V Y1	1500 pF 400 V Y1	330 pF 400 V Y1
THR 40-7223WI	453215K8814A	742792515	7448030509					