

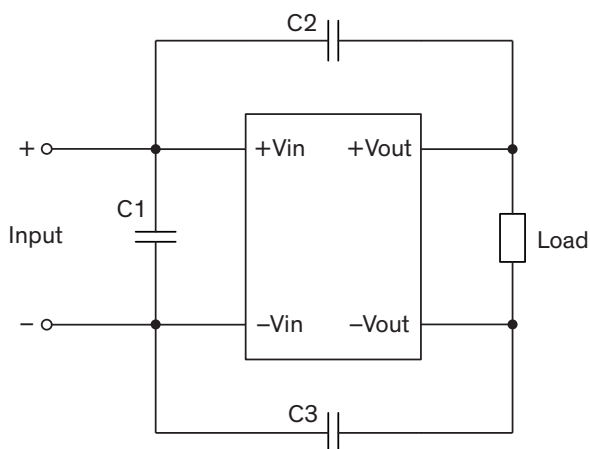
EMI Consideration

Suggested filter to comply with EN 55032 Conducted and Radiated Emissions Class A limits

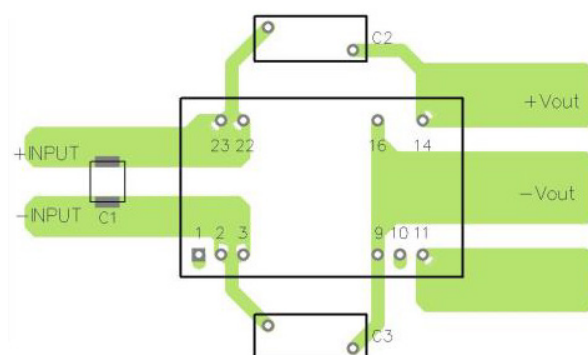
TEN 3WIRH series meet EN 55032 Conducted and Radiated Emissions Class A limits without external components.

Suggested filter to comply with EN 55032 Conducted and Radiated Emissions Class B limits

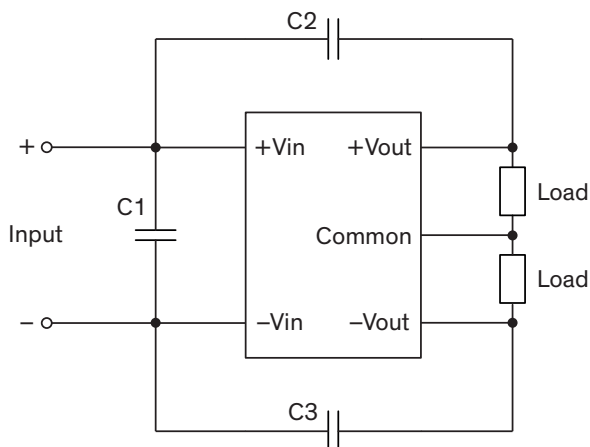
Single output models



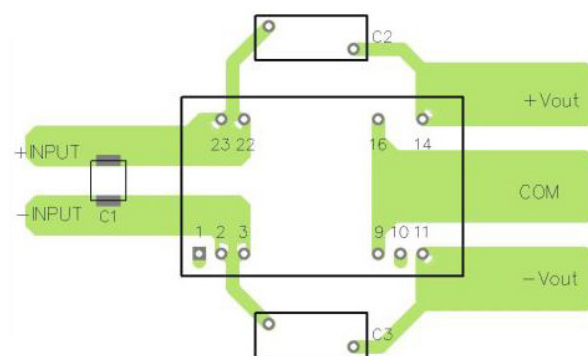
Layout suggestion Top View



Dual output models



Layout suggestion Top View



Suggested components to comply with EN 55032 Conducted and Radiated Emissions Class B limits

Model	C1	C2	C3
TEN 3-xxxxxWIRH	1 μ F / 250 V / 1812 MLCC	330 pF / Y1 capacitor	680 pF / Y1 capacitor