

### Standard Packaging - Tube

- 
- Technical drawing showing a stepped profile with dimensions and a cross-section. The profile has a total width of 22.0, a top width of 15.5, a bottom width of 12.6, and a total height of 11.0. The cross-section shows a total width of 360.0 and a height of 2.0.

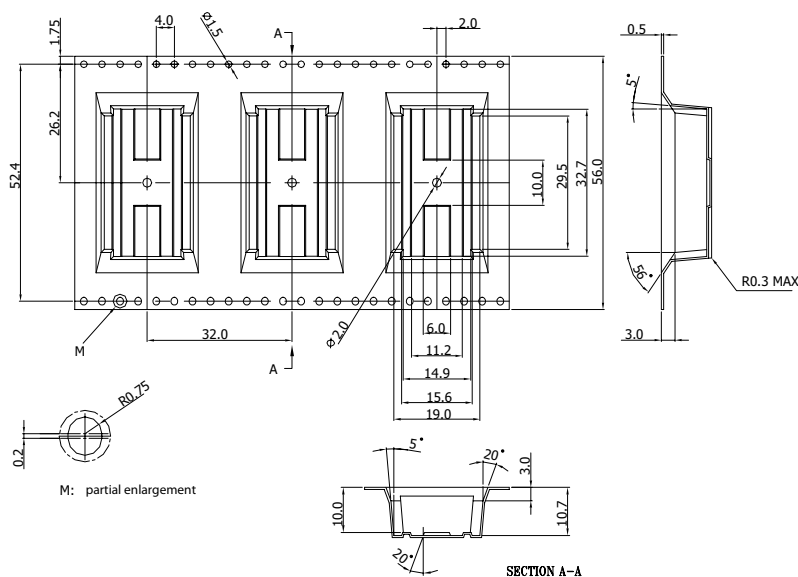
Technical drawing of a circular mechanical part, likely a wheel or a flange, showing a top view and a cross-section view.

**Top View:**

- The part is circular with a central hub and four spokes.
- The outer diameter is dimensioned as  $\varnothing 330.0$ .
- The central hub has a diameter of  $\varnothing 13.45_{-0.25}^{+0.25}$ .
- The part is centered on a green crosshair.

**Cross-section View:**

- The cross-section shows the thickness of the part, which is dimensioned as 60.9.
- The central hole has a diameter of  $\varnothing 13.45_{-0.25}^{+0.25}$ .
- The distance from the center of the hole to the outer edge is dimensioned as 99.1.
- The distance from the center of the hole to the inner edge of the central hub is dimensioned as 2.2.



Dimensions in [mm], Tolerance  $\pm 0.1\text{mm}$