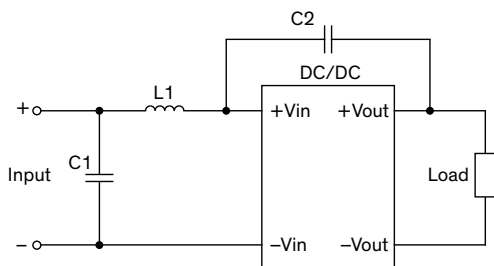


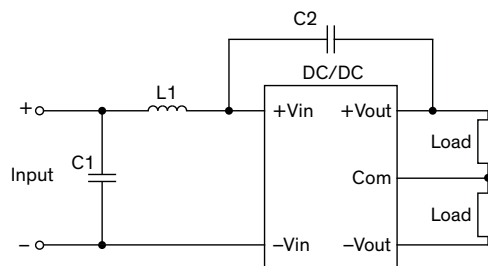
EMI Consideration

Suggested filter to comply with EN 55032 Class A & B limits

Single output models



Dual output models



Suggested components to comply with EN 55032 Class A limits

Model	C1	L1	C2
TDL 3-05xx	22 μ F / 16 V 1206 X5R MLCC	3.3 μ H	-
TDL 3-12xx	22 μ F / 25 V 1206 X5R MLCC	18 μ H	-
TDL 3-24xx	10 μ F / 50 V 1206 X5R MLCC	39 μ H	-
TDL 3-48xx	3.3 μ F / 100 V 1206 X7R MLCC	68 μ H	-

Suggested components to comply with EN 55032 Class B limits

Model	C1	L1	C2
TDL 3-05xx	22 μ F / 16 V 1206 X5R MLCC	10 μ H	-
TDL 3-12xx	22 μ F / 25 V 1206 X5R MLCC	18 μ H	220 pF / 2 kV 1808 X7R MLCC
TDL 3-24xx	10 μ F / 50 V 1206 X5R MLCC	68 μ H	220 pF / 2 kV 1808 X7R MLCC
TDL 3-48xx	4.7 μ F / 100 V 1206 X7S MLCC	82 μ H	220 pF / 2 kV 1808 X7R MLCC