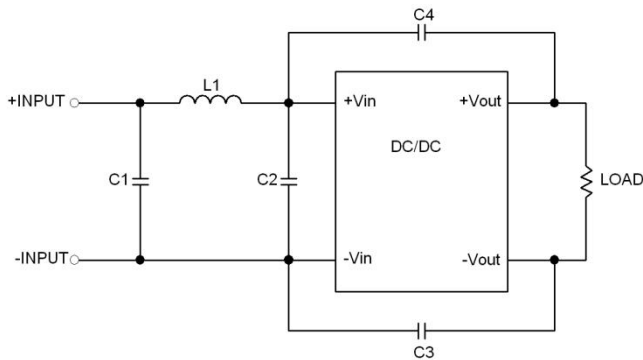


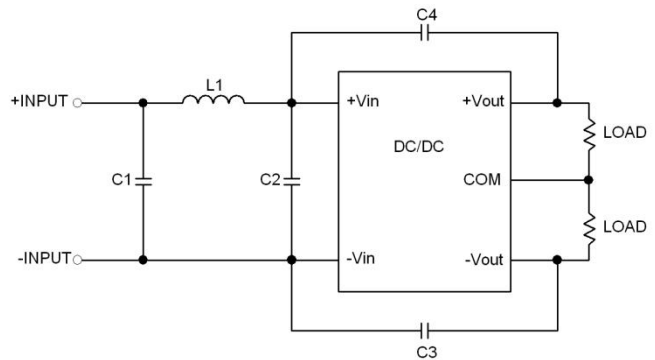
EMI Consideration

Suggested filter to comply with EN55022 Class A & B limits

Single output models



Dual output models



EN55022 class A

Models	C1	C2	C3	C4	L1	inductor (accessory)	
						order code	datasheet
5 Vin	22 μ F / 16 V 1206 MLCC	22 μ F / 16 V 1206 MLCC	150 pF / 3 kV 1808 MLCC	–	2.2 μ H / 3.8 A	TCK-059	www.tracopower.com/overview/tck-059
12 Vin	22 μ F / 25 V 1206 MLCC	–	680 pF / 3 kV 1808 MLCC	–	8.2 μ H / 1.5 A	TCK-077	www.tracopower.com/overview/tck-077
24 Vin	10 μ F / 50 V 1206 MLCC	–	1000 pF / 3 kV 1808 MLCC	–	10 μ H / 1.4 A	TCK-047	www.tracopower.com/overview/tck-047
48 Vin	4.7 μ F / 100 V 1210 MLCC	–	1000 pF / 3 kV 1808 MLCC	–	33 μ H / 0.88 A	TCK-089	www.tracopower.com/overview/tck-089

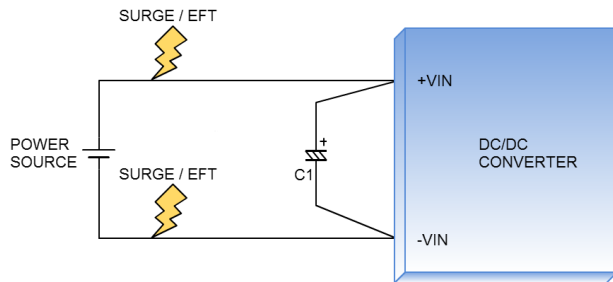
EN55022 class B

Models	C1	C2	C3	C4	L1	inductor (accessory)	
						order code	datasheet
5 Vin	47 μ F / 16 V 1206 MLCC	47 μ F / 16 V 1206 MLCC	150 pF / 3 kV 1808 MLCC	–	3.3 μ H / 2.0 A	TCK-044	www.tracopower.com/overview/tck-044
12 Vin	22 μ F / 25 V 1206 MLCC	22 μ F / 25 V 1206 MLCC	330 pF / 3 kV 1808 MLCC	330 pF / 3 kV 1808 MLCC	8.2 μ H / 1.5 A	TCK-077	www.tracopower.com/overview/tck-077
24 Vin	10 μ F / 50 V 1206 MLCC	10 μ F / 50 V 1206 MLCC	330 pF / 3 kV 1808 MLCC	330 pF / 3 kV 1808 MLCC	10 μ H / 1.4 A	TCK-047	www.tracopower.com/overview/tck-047
48 Vin	4.7 μ F / 100 V 1210 MLCC	4.7 μ F / 100 V 1210 MLCC	330 pF / 3 kV 1808 MLCC	330 pF / 3 kV 1808 MLCC	33 μ H / 0.88 A	TCK-089	www.tracopower.com/overview/tck-089

EMI Consideration

Surge and Burst

The TMR 6 series can meet fast transient EN61000-4-4 and surge EN61000-4-5 performance criteria A with external components connected to the input terminals of the module. Please see below schematic.



C1:

ref.: Nippon-chemi-con KY series

TMR 6-05xx models	330 μ F / 50 V
Other models	220 μ F / 100 V