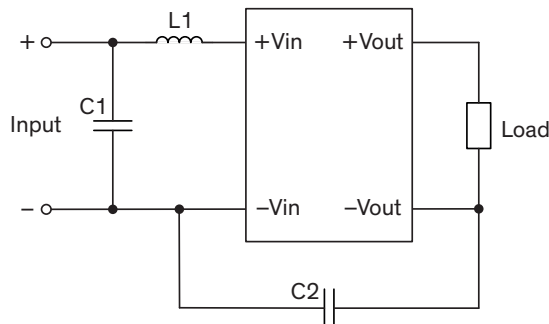


EMI Consideration

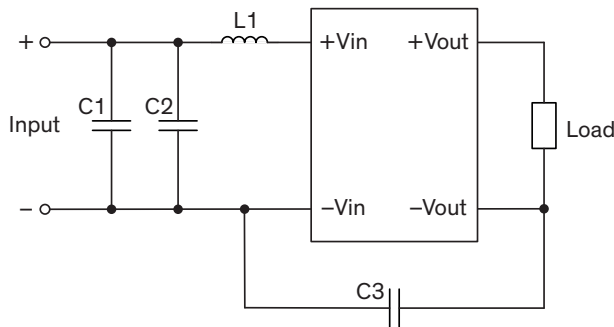
Suggested filter to comply with EN 55032 Conducted Emissions Class A limits



Suggested components to comply with EN 55032 Conducted Emissions Class A limits

Model	C1	C2	L1
TMR 3-05xxE	10 μ F / 25 V, 1206 X7R	470 pF / 2 KV 1808 X7R	3.3 μ H / 2 A, SCD0403T
TMR 3-12xxE	4.7 μ F / 25 V, 1206 X7R	470 pF / 2 KV 1808 X7R	3.3 μ H / 2 A, SCD0403T
TMR 3-24xxE	4.7 μ F / 50 V, 1812 X7R	470 pF / 2 KV 1808 X7R	12 μ H / 0.75 A, SR0302T
TMR 3-48xxE	1 μ F / 100 V, 1812 X7R	470 pF / 2 KV 1808 X7R	88 μ H / 1.42 A, SCD0403T

Suggested filter to comply with EN 55032 Conducted Emissions Class B limits



Suggested components to comply with EN 55032 Conducted Emissions Class B limits

Model	C1	C2	C3	L1
TMR 3-05xxE	10 μ F / 25 V, 1210 X7R	10 μ F / 25 V, 1210 X7R	2200 pF / 2 KV, 1808 X7R	3.3 μ H / 2 A, SCD0403T
TMR 3-12xxE	10 μ F / 25 V, 1210 X7R	10 μ F / 25 V, 1210 X7R	2200 pF / 2 KV, 1808 X7R	3.3 μ H / 2 A, SCD0403T
TMR 3-24xxE	10 μ F / 50 V, 2220 X7R	–	1000 pF / 2 KV, 1808 X7R	27 μ H / 0.71 A, SR0302T
TMR 3-48xxE	4.7 μ F / 100 V, 2220 X7R	–	1000 pF / 2 KV, 1808 X7R	88 μ H / 1.42 A, SCD0403T