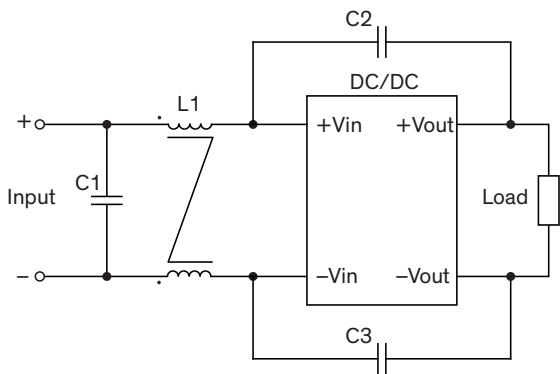


**EMI Consideration**

**Suggested filter to comply with EN 55032 Conducted Emissions Class A limits**

TMDC 40 series meet EN 55032 Conducted Emissions Class A without external components.

**Suggested filter to comply with EN 55032 Radiated Emissions Class A limits**



Suggested components to comply with EN 55032 Radiated Emissions Class A limits				
Model	C1	C2	C3	L1
TMDC 40-24xx	4.7 $\mu$ F / 50 V	220 pF / 3 kV	220 pF / 3 kV	175 $\mu$ H (each winding)
TMDC 40-48xx	3.3 $\mu$ F / 100 V	220 pF / 3 kV	220 pF / 3 kV	175 $\mu$ H (each winding)