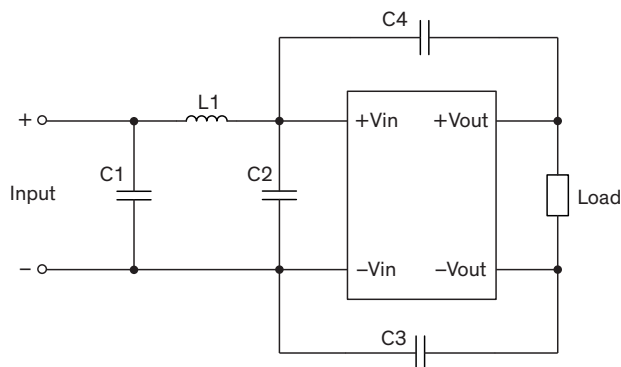


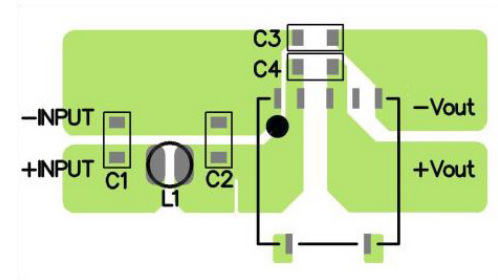
EMI Consideration

Suggested filter to comply with EN 55032 Class A resp. B limits

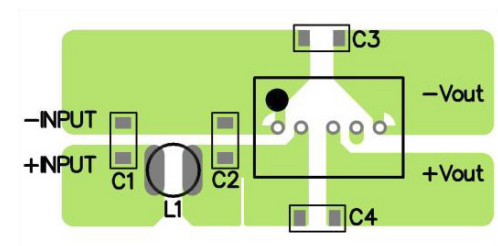
Single output models



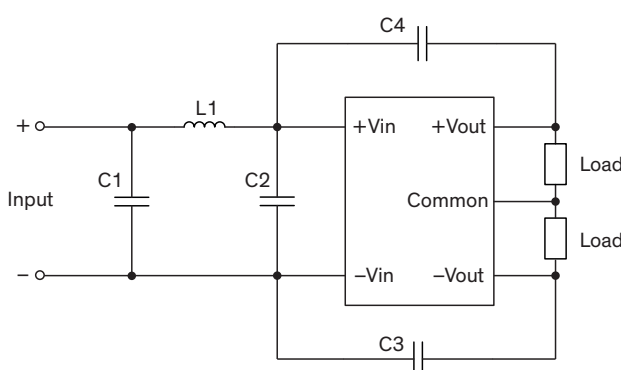
SMD models



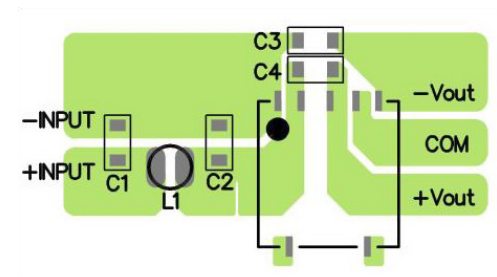
DIP models



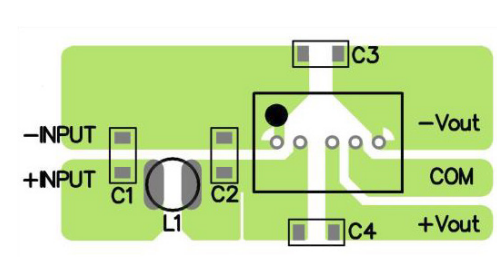
Dual output models



SMD models



DIP models



Suggested components

Suggested components to comply with EN 55032 Class A limits					
Model	C1	C2	C3	C4	L1
TRN 1-05xx(SM)	22 μ F / 16 V 1206 MLCC	N/A	N/A	N/A	TCK-145 6.8 μ H, 1.0 A
TRN 1-12xx(SM)	10 μ F / 25 V 1206 MLCC	N/A	150 pF / 2 kV 1206 MLCC	N/A	TCK-146 10 μ H, 0.8 A
TRN 1-24xx(SM)	4.7 μ F / 50 V 1206 MLCC	N/A	150 pF / 2 kV 1206 MLCC	N/A	TCK-147 15 μ H, 0.6 A
TRN 1-48xx(SM)	2.2 μ F / 100 V 1206 MLCC	N/A	150 pF / 2 kV 1206 MLCC	N/A	TCK-148 82 μ H, 0.25 A

Suggested components to comply with EN 55032 Class B limits					
Model	C1	C2	C3	C4	L1
TRN 1-05xx(SM)	47 μ F / 16 V 1206 MLCC	N/A	N/A	N/A	TCK-145 6.8 μ H, 1.0 A
TRN 1-12xx(SM)	10 μ F / 25 V 1206 MLCC	10 μ F / 25 V 1206 MLCC	150 pF / 2 kV 1206 MLCC	N/A	TCK-146 10 μ H, 0.8 A
TRN 1-24xx(SM)	4.7 μ F / 50 V 1206 MLCC	4.7 μ F / 50 V 1206 MLCC	150 pF / 2 kV 1206 MLCC	N/A	TCK-147 15 μ H, 0.6 A
TRN 1-48xx(SM)	2.2 μ F / 100 V 1206 MLCC	2.2 μ F / 100 V 1206 MLCC	150 pF / 2 kV 1206 MLCC	N/A	TCK-148 82 μ H, 0.25 A

TCK datasheets

TCK-145: www.tracopower.com/overview/tck-145

TCK-146: www.tracopower.com/overview/tck-146

TCK-147: www.tracopower.com/overview/tck-147

TCK-148: www.tracopower.com/overview/tck-148