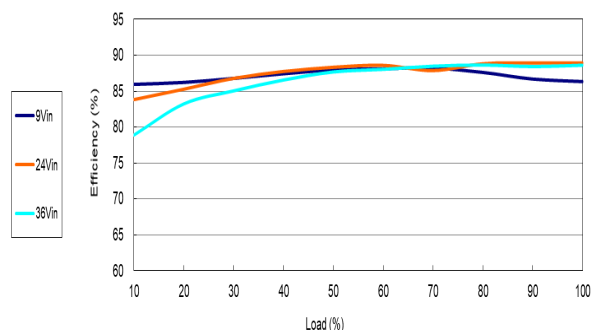


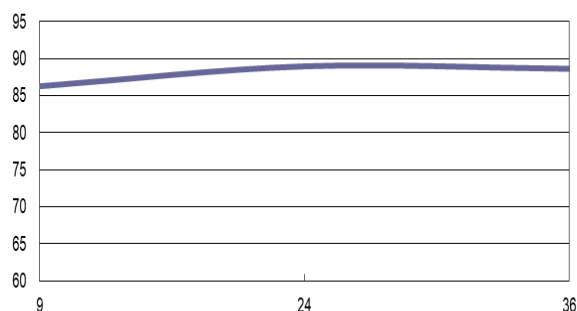
Characteristic Curves

THL 30-2410WI

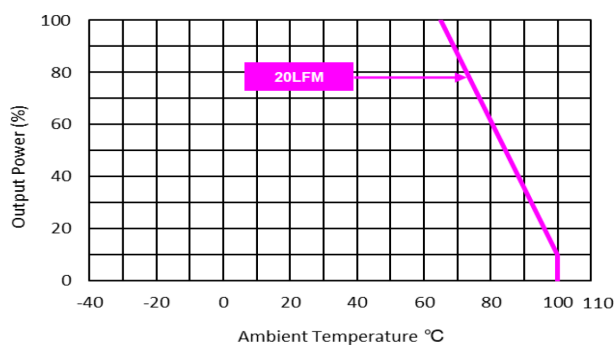
Efficiency versus Output Current



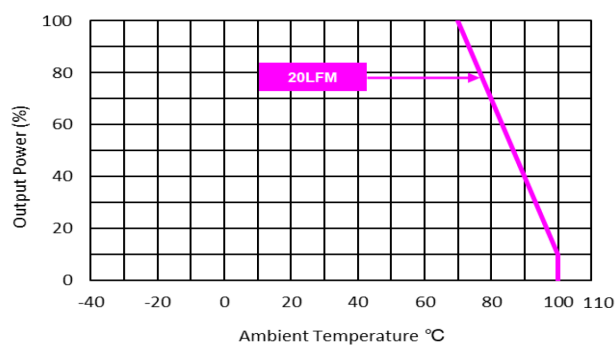
Efficiency versus Input Voltage



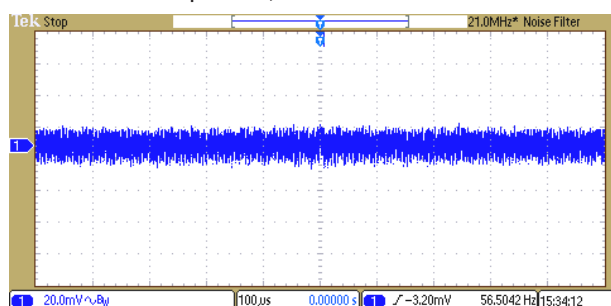
Derating Output versus Ambient Temperature without Heatsink



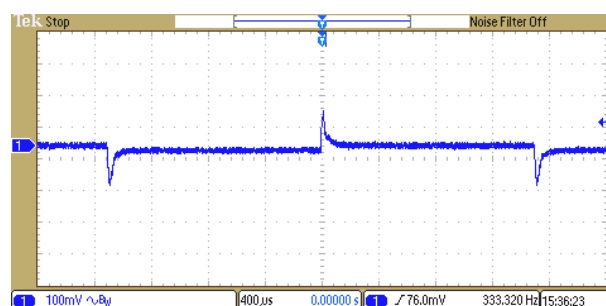
Derating Output versus Ambient Temperature with Heatsink THL-HS1



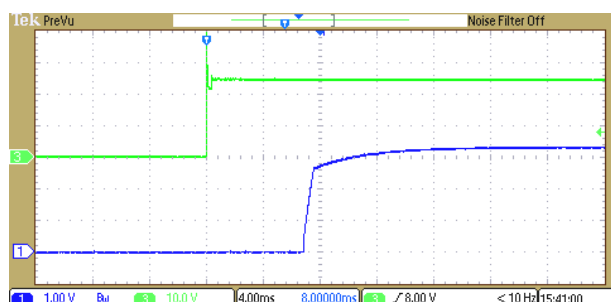
Typical Output Ripple and Noise at Full Load with external capacitor; see datasheet



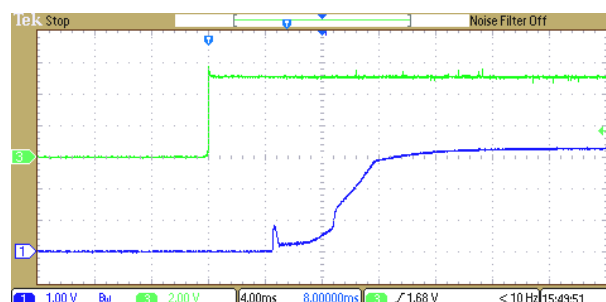
Transient Response to Dynamic Load Change (25%)



Typical Input/Output Start-Up Characteristic at Full Load

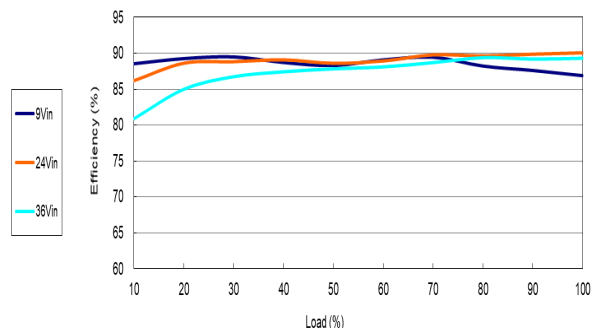


Typical Input/Output Start-Up Characteristic at Full Load with Remote On

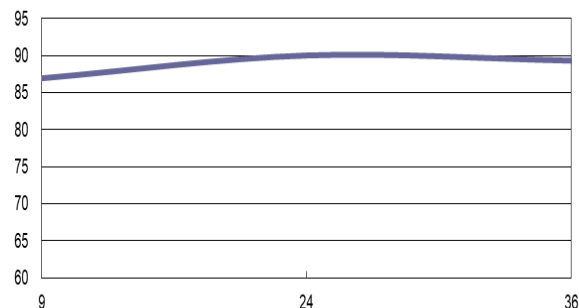


THL 30-2411WI

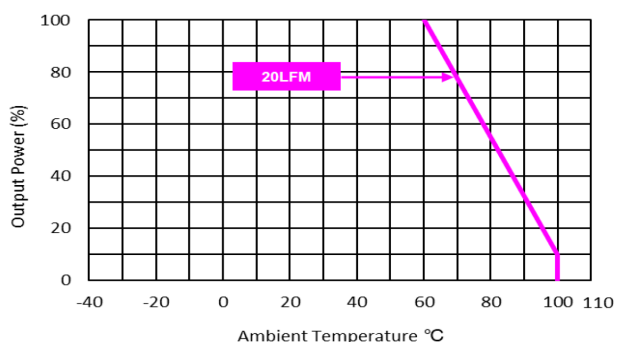
Efficiency versus Output Current



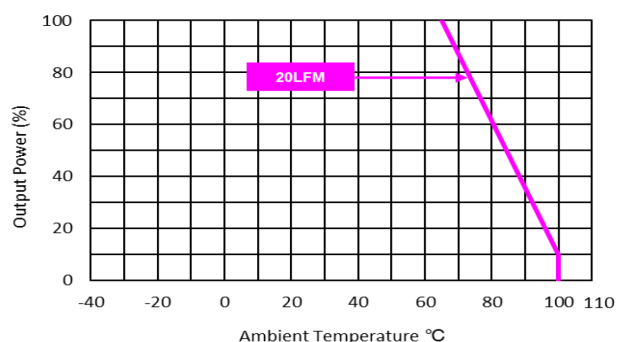
Efficiency versus Input Voltage



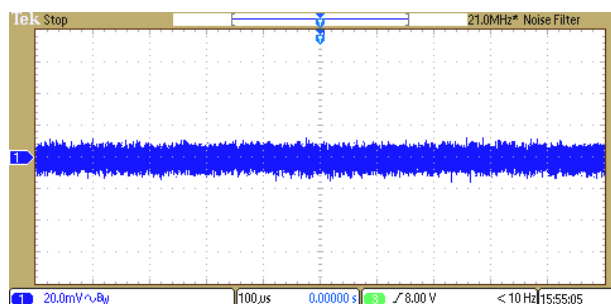
Derating Output versus Ambient Temperature without Heatsink



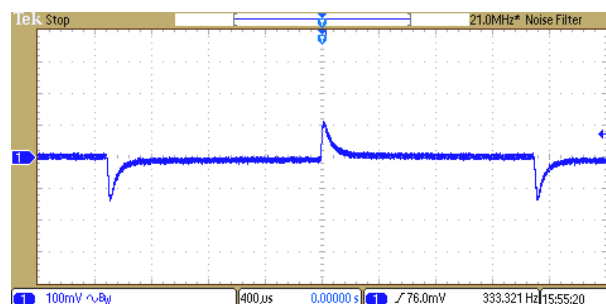
Derating Output versus Ambient Temperature with Heatsink THL-HS1



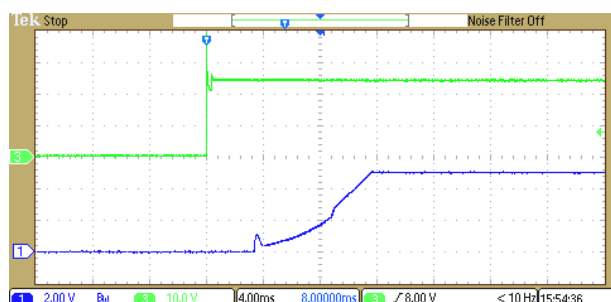
Typical Output Ripple and Noise at Full Load with external capacitor; see datasheet



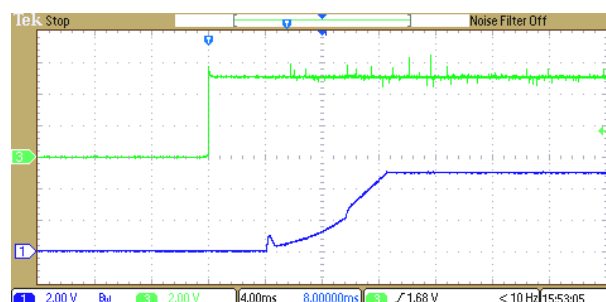
Transient Response to Dynamic Load Change (25%)



Typical Input/Output Start-Up Characteristic at Full Load

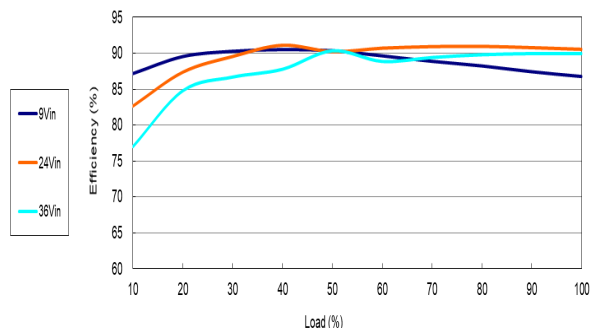


Typical Input/Output Start-Up Characteristic at Full Load with Remote On

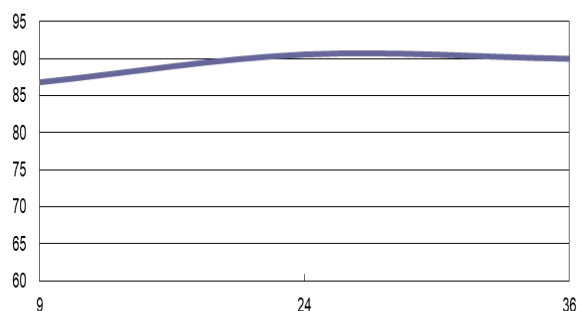


THL 30-2412WI

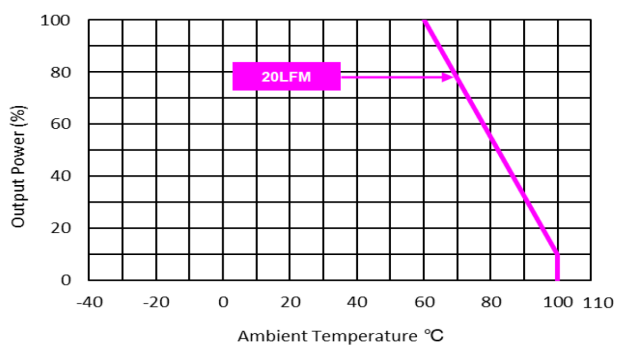
Efficiency versus Output Current



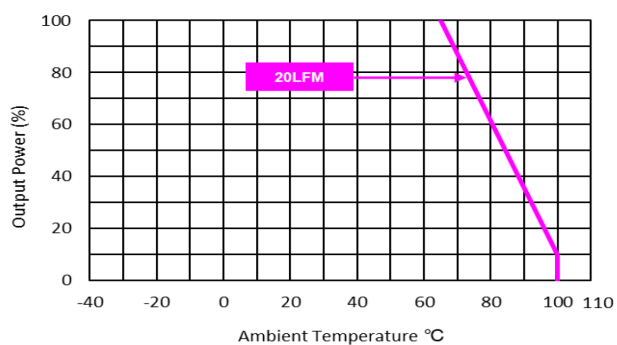
Efficiency versus Input Voltage



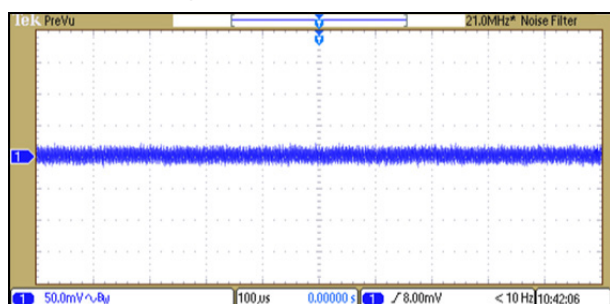
Derating Output versus Ambient Temperature without Heatsink



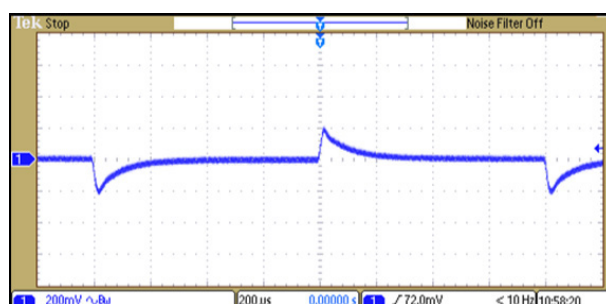
Derating Output versus Ambient Temperature with Heatsink THL-HS1



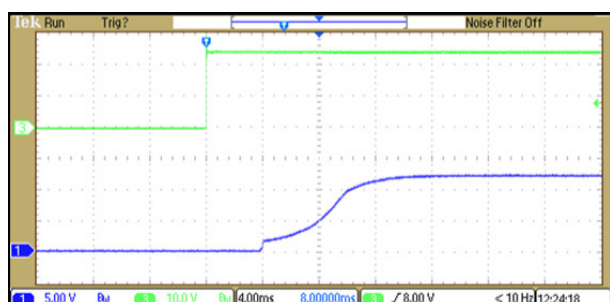
Typical Output Ripple and Noise at Full Load with external capacitor; see datasheet



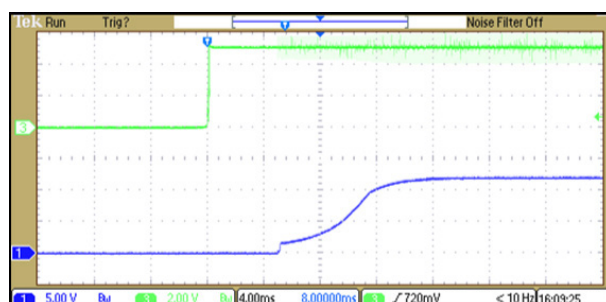
Transient Response to Dynamic Load Change (25%)



Typical Input/Output Start-Up Characteristic at Full Load

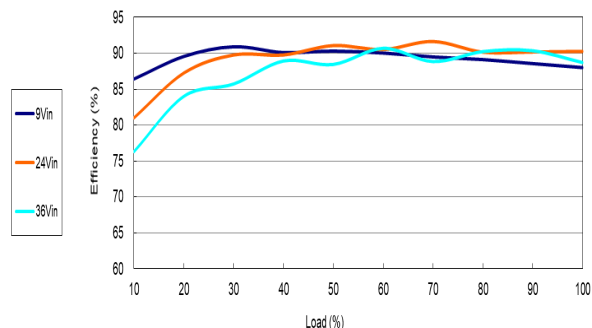


Typical Input/Output Start-Up Characteristic at Full Load with Remote On

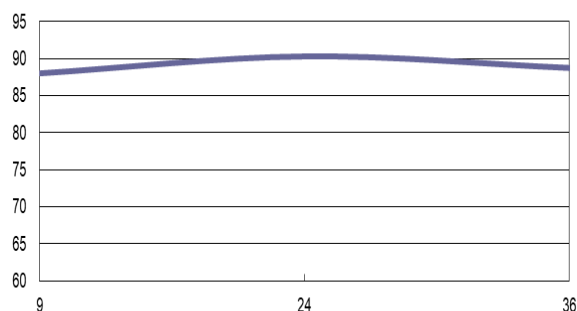


THL 30-2413WI

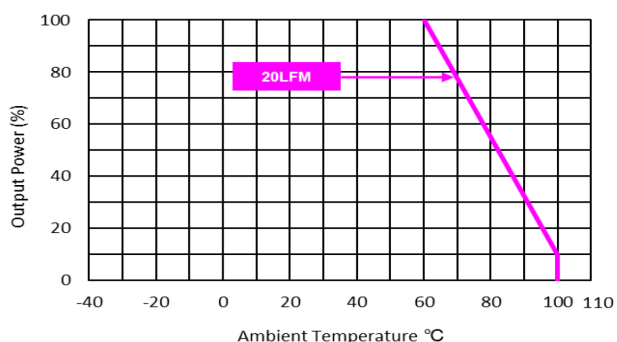
Efficiency versus Output Current



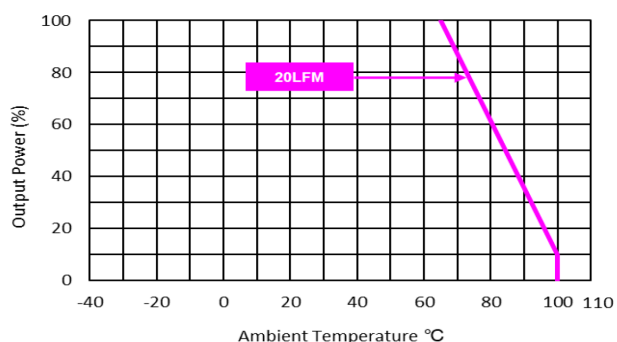
Efficiency versus Input Voltage



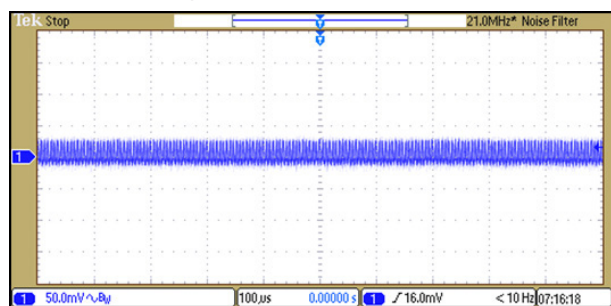
Derating Output versus Ambient Temperature without Heatsink



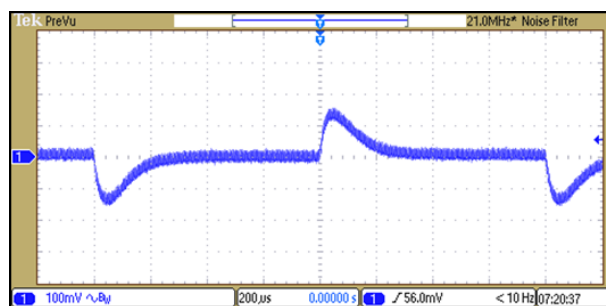
Derating Output versus Ambient Temperature with Heatsink THL-HS1



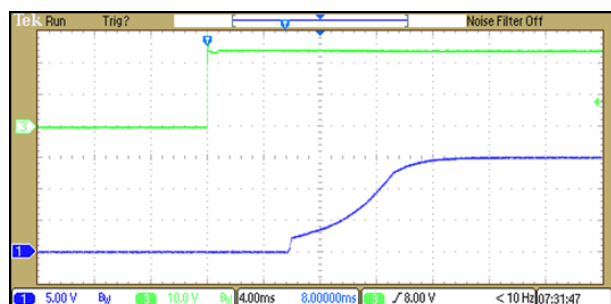
Typical Output Ripple and Noise at Full Load with external capacitor; see datasheet



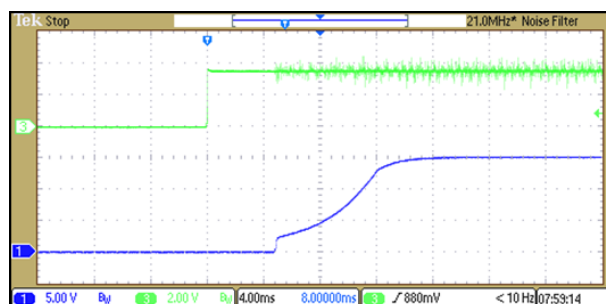
Transient Response to Dynamic Load Change (25%)



Typical Input/Output Start-Up Characteristic at Full Load

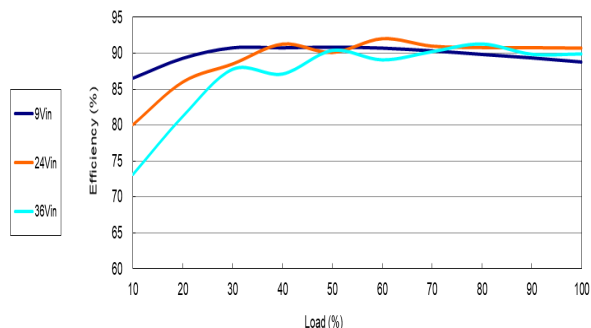


Typical Input/Output Start-Up Characteristic at Full Load with Remote On

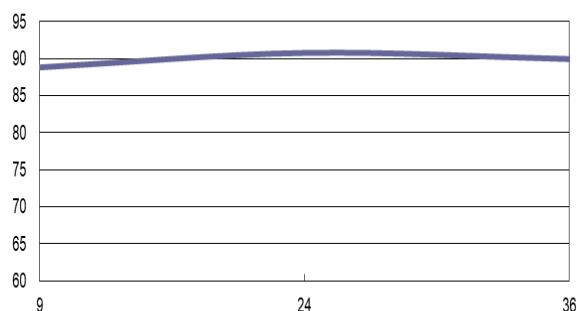


THL 30-2415WI

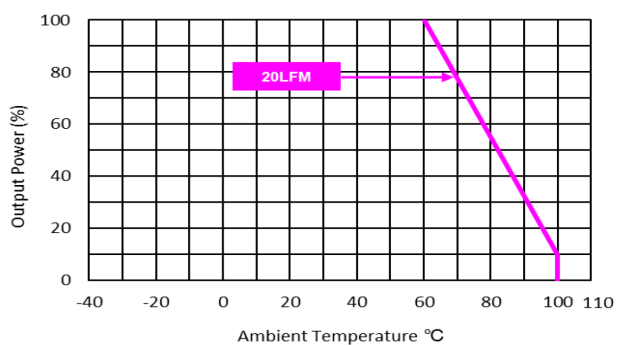
Efficiency versus Output Current



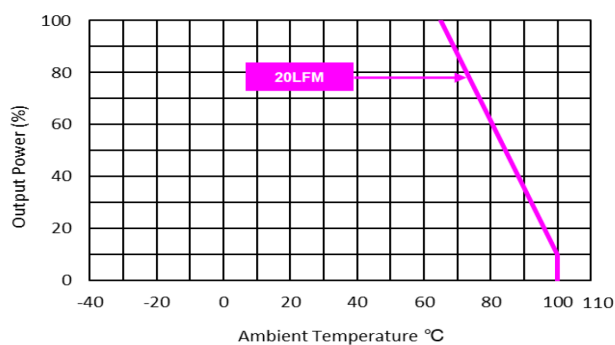
Efficiency versus Input Voltage



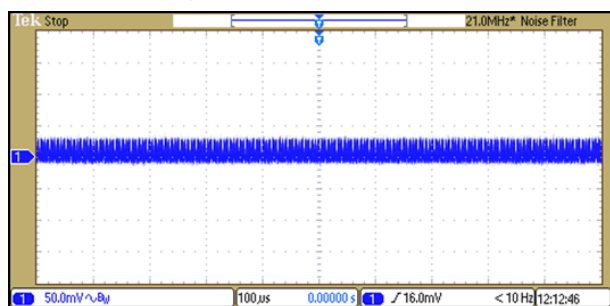
Derating Output versus Ambient Temperature without Heatsink



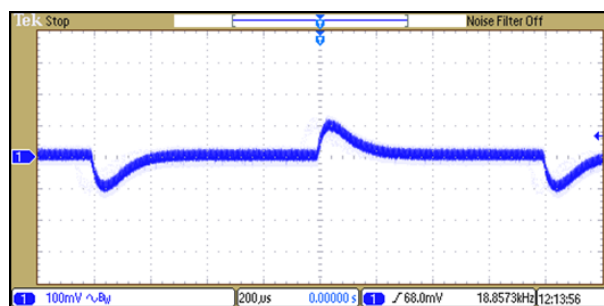
Derating Output versus Ambient Temperature with Heatsink THL-HS1



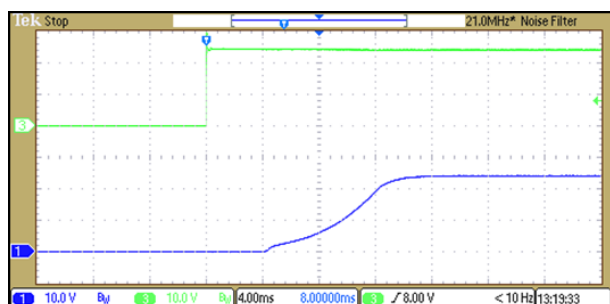
Typical Output Ripple and Noise at Full Load with external capacitor; see datasheet



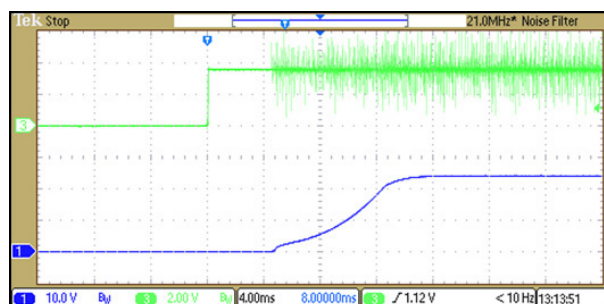
Transient Response to Dynamic Load Change (25%)



Typical Input/Output Start-Up Characteristic at Full Load

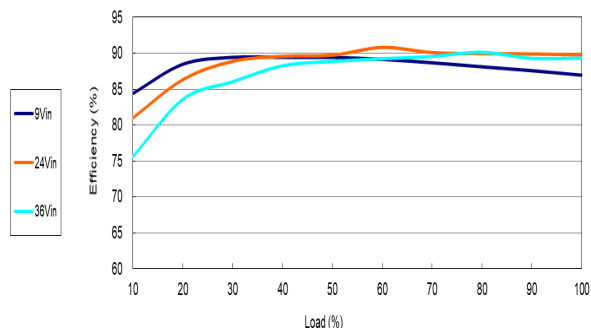


Typical Input/Output Start-Up Characteristic at Full Load with Remote On

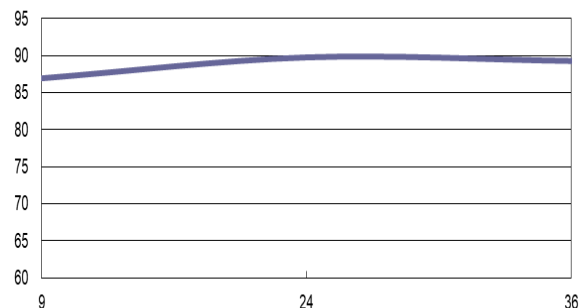


THL 30-2422WI

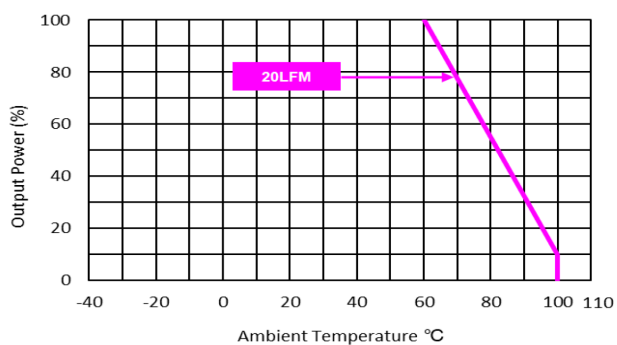
Efficiency versus Output Current



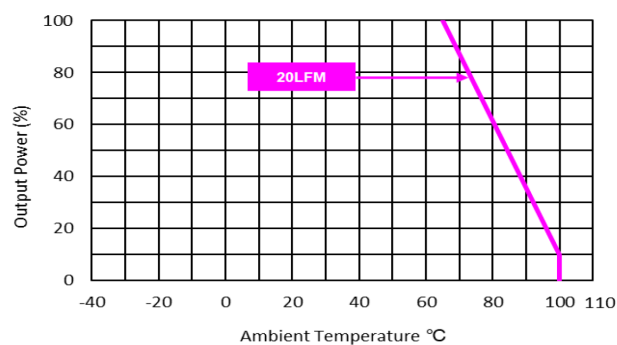
Efficiency versus Input Voltage



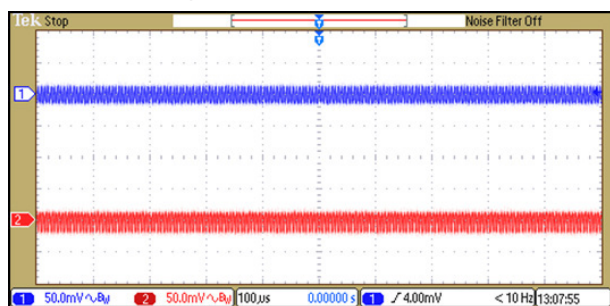
Derating Output versus Ambient Temperature without Heatsink



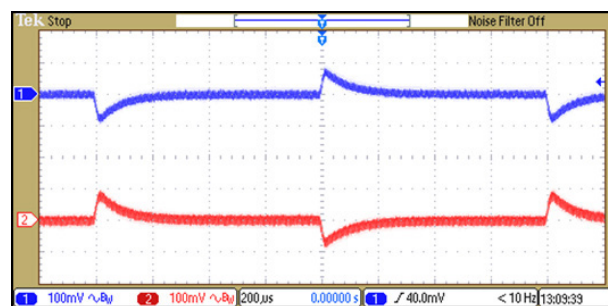
Derating Output versus Ambient Temperature with Heatsink THL-HS1



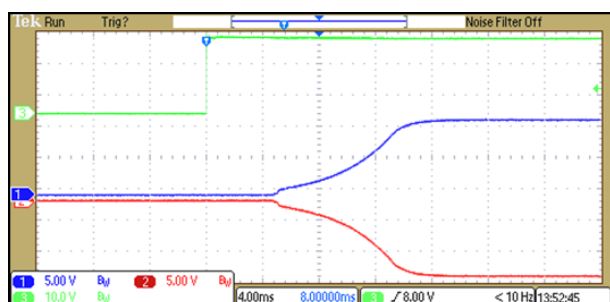
Typical Output Ripple and Noise at Full Load with external capacitor; see datasheet



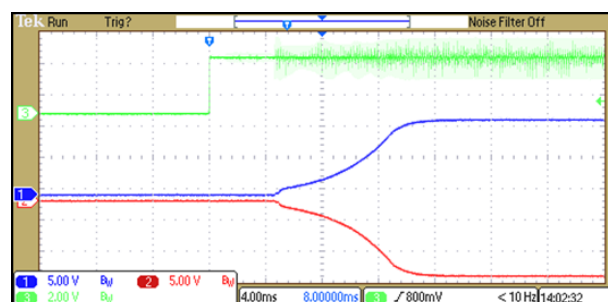
Transient Response to Dynamic Load Change (25%)



Typical Input/Output Start-Up Characteristic at Full Load

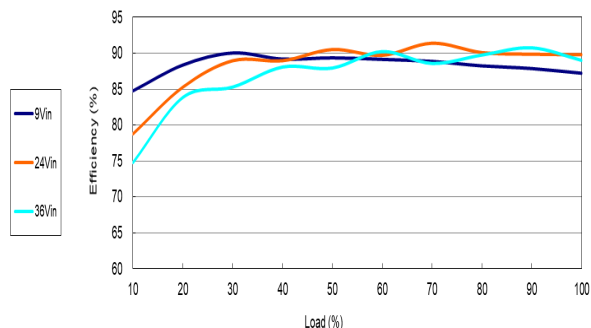


Typical Input/Output Start-Up Characteristic at Full Load with Remote On

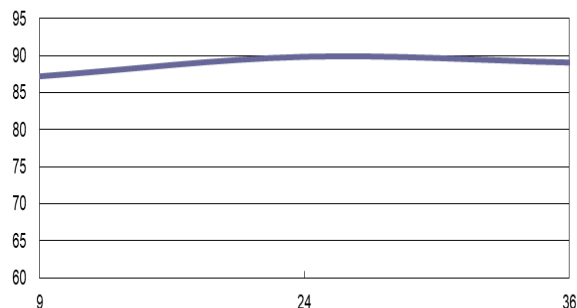


THL 30-2423WI

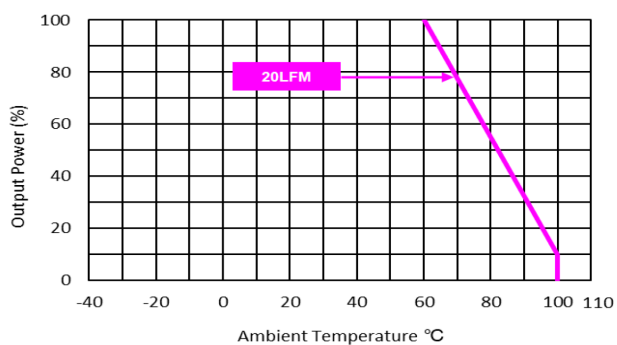
Efficiency versus Output Current



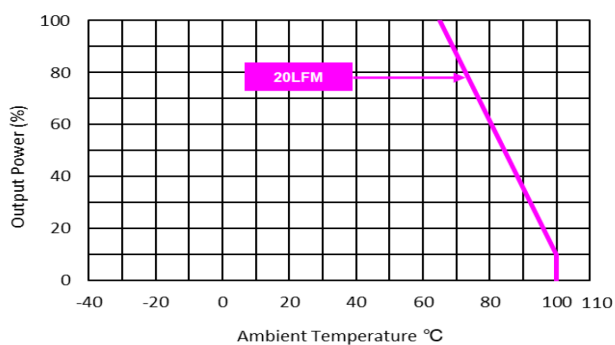
Efficiency versus Input Voltage



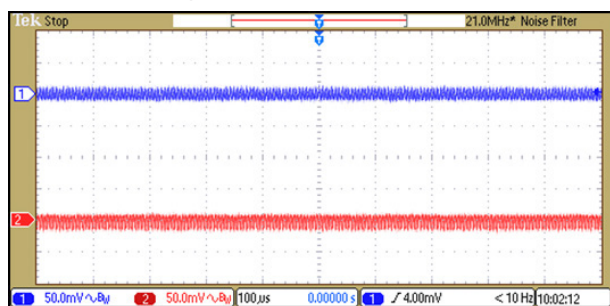
Derating Output versus Ambient Temperature without Heatsink



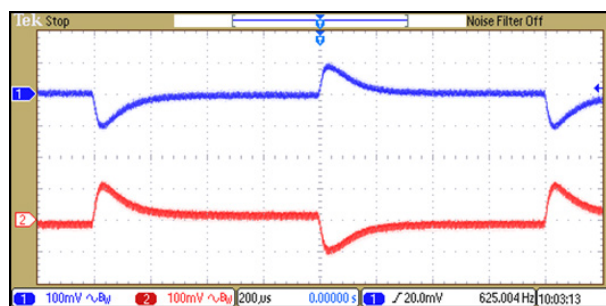
Derating Output versus Ambient Temperature with Heatsink THL-HS1



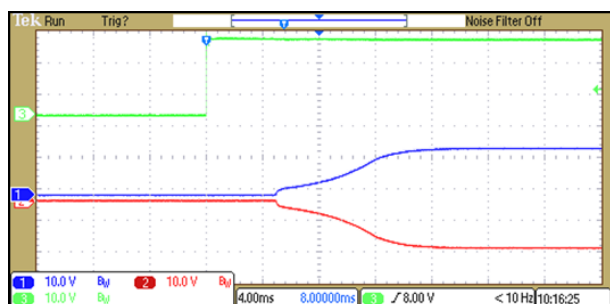
Typical Output Ripple and Noise at Full Load with external capacitor; see datasheet



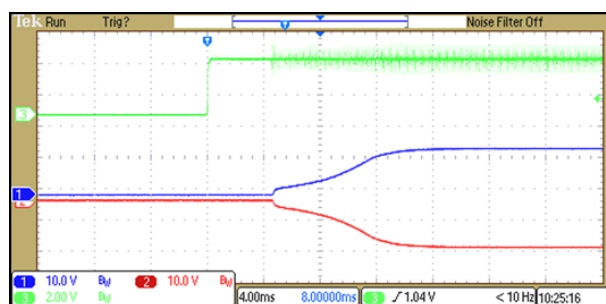
Transient Response to Dynamic Load Change (25%)



Typical Input/Output Start-Up Characteristic at Full Load

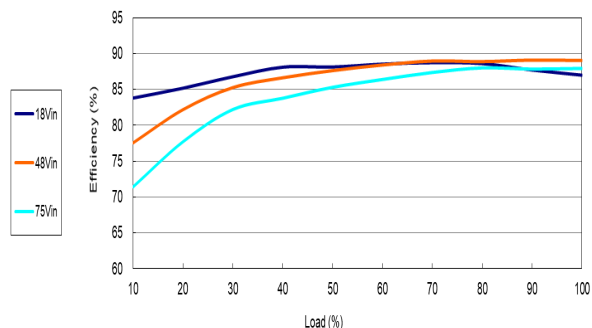


Typical Input/Output Start-Up Characteristic at Full Load with Remote On

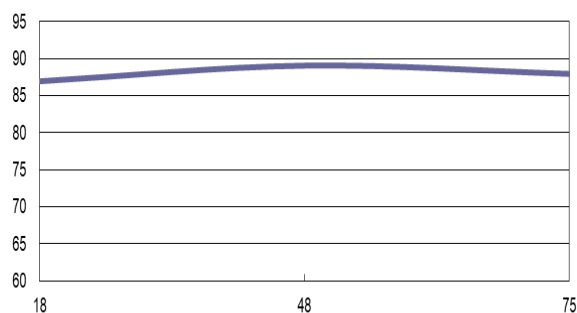


THL 30-4810WI

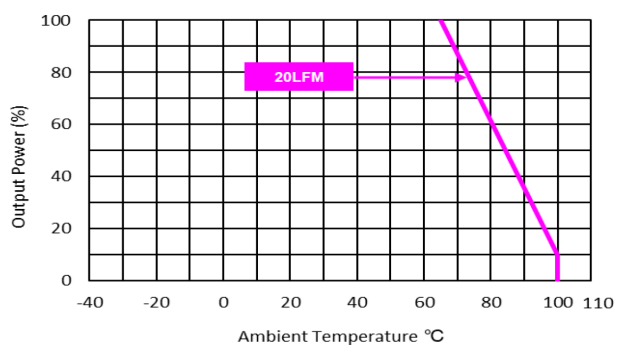
Efficiency versus Output Current



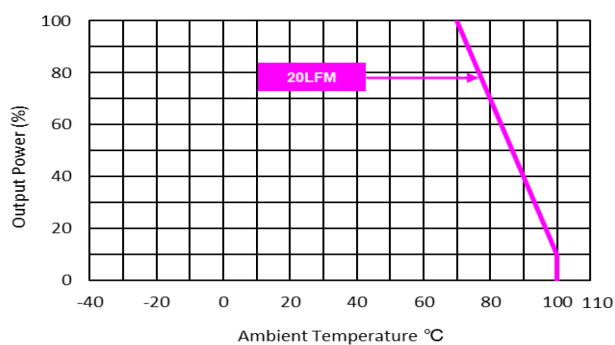
Efficiency versus Input Voltage



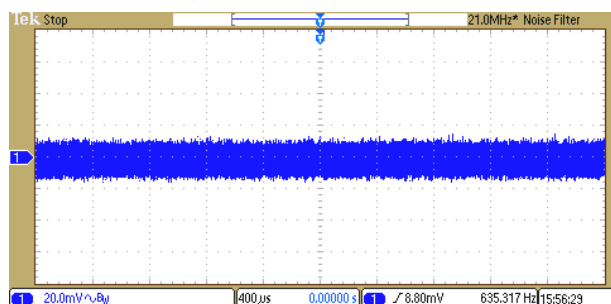
Derating Output versus Ambient Temperature without Heatsink



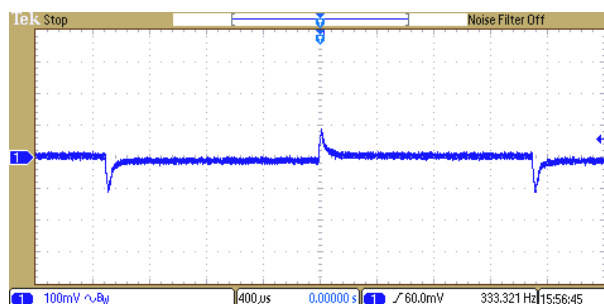
Derating Output versus Ambient Temperature with Heatsink THL-HS1



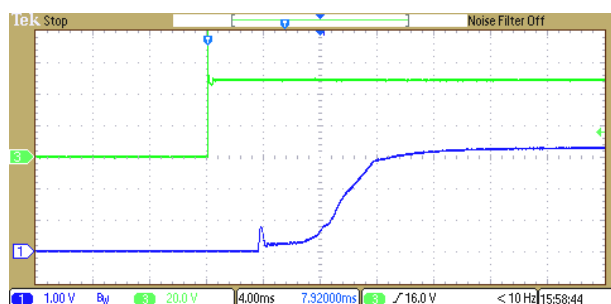
Typical Output Ripple and Noise at Full Load with external capacitor; see datasheet



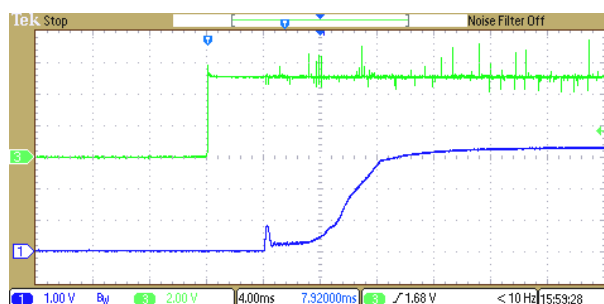
Transient Response to Dynamic Load Change (25%)



Typical Input/Output Start-Up Characteristic at Full Load

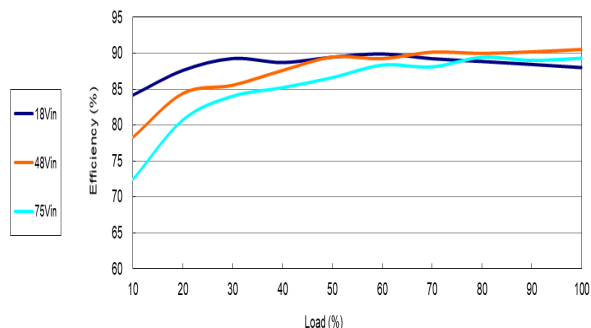


Typical Input/Output Start-Up Characteristic at Full Load with Remote On

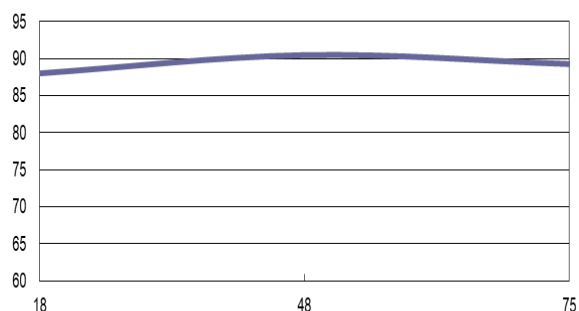


THL 30-4811WI

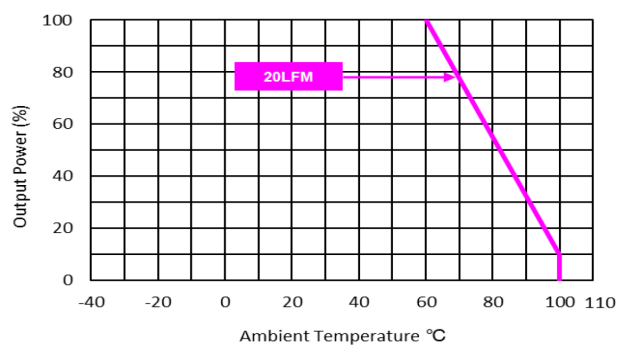
Efficiency versus Output Current



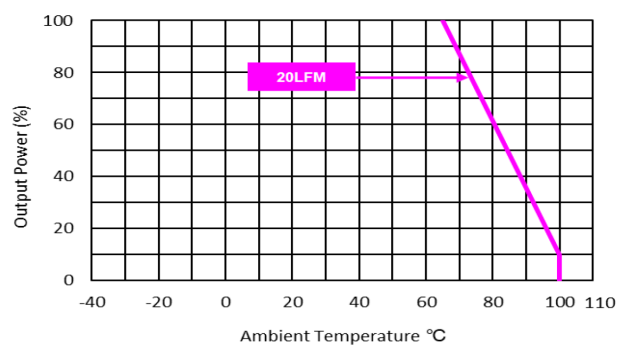
Efficiency versus Input Voltage



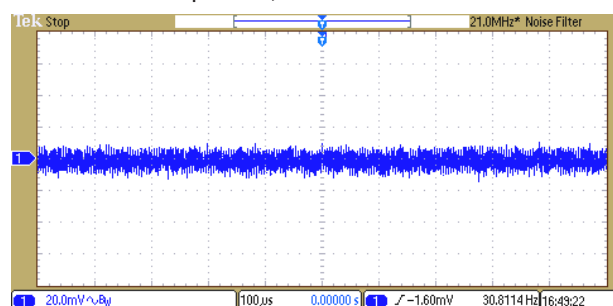
Derating Output versus Ambient Temperature without Heatsink



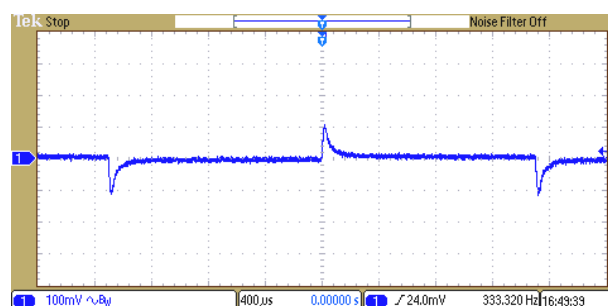
Derating Output versus Ambient Temperature with Heatsink THL-HS1



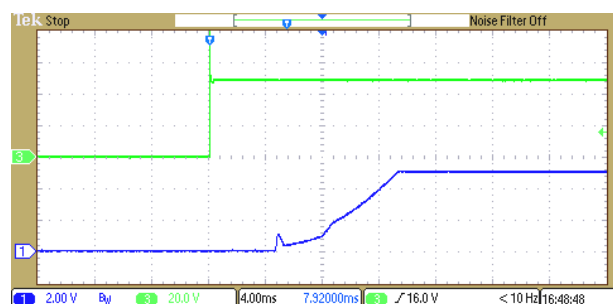
Typical Output Ripple and Noise at Full Load with external capacitor; see datasheet



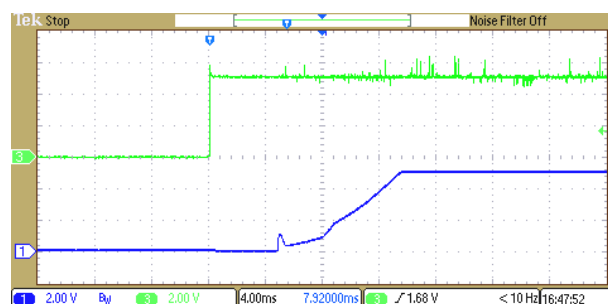
Transient Response to Dynamic Load Change (25%)



Typical Input/Output Start-Up Characteristic at Full Load

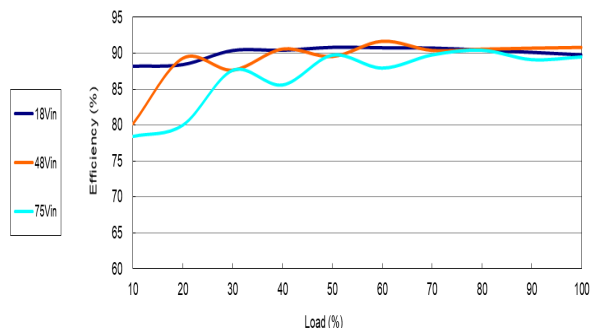


Typical Input/Output Start-Up Characteristic at Full Load with Remote On

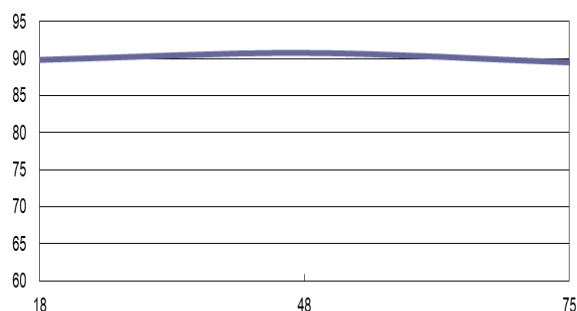


THL 30-4812WI

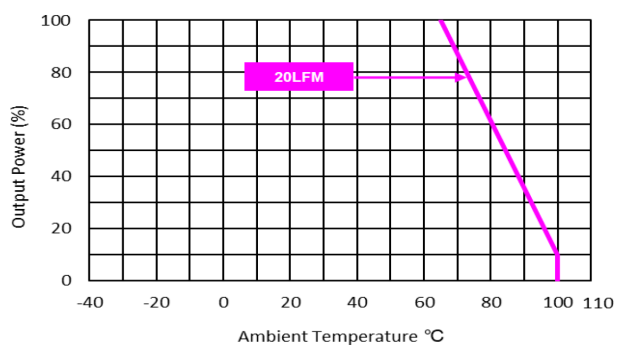
Efficiency versus Output Current



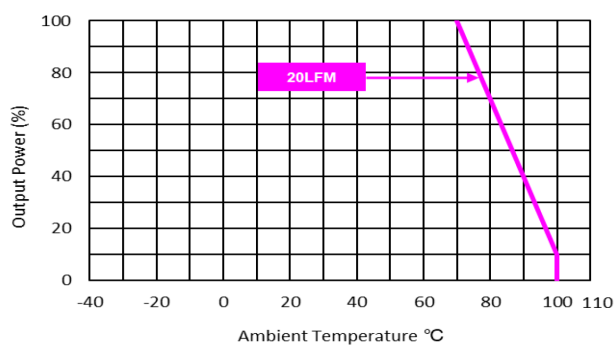
Efficiency versus Input Voltage



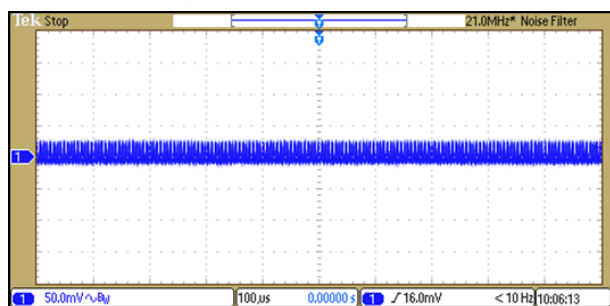
Derating Output versus Ambient Temperature without Heatsink



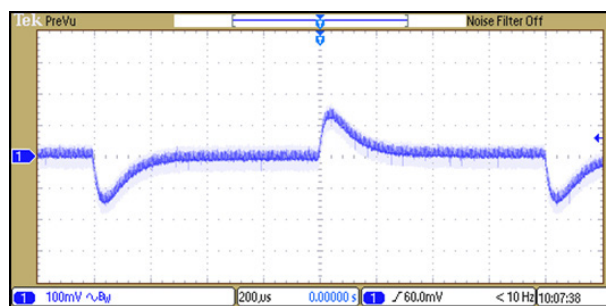
Derating Output versus Ambient Temperature with Heatsink THL-HS1



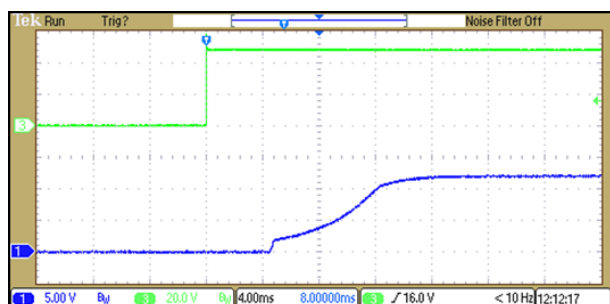
Typical Output Ripple and Noise at Full Load with external capacitor; see datasheet



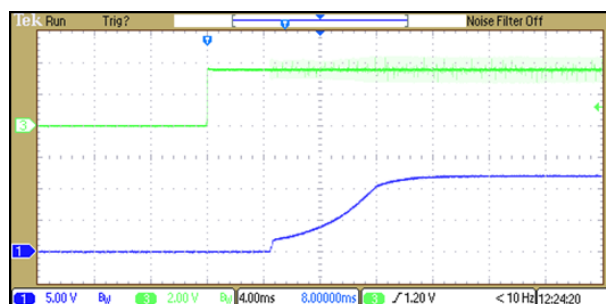
Transient Response to Dynamic Load Change (25%)



Typical Input/Output Start-Up Characteristic at Full Load

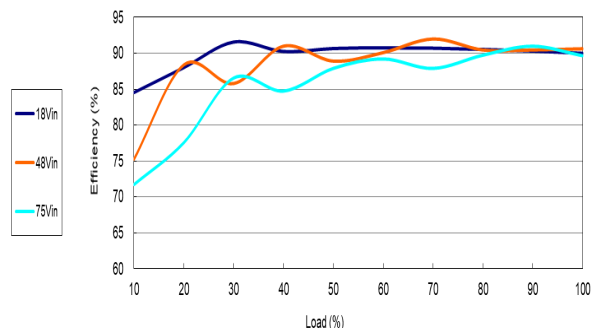


Typical Input/Output Start-Up Characteristic at Full Load with Remote On

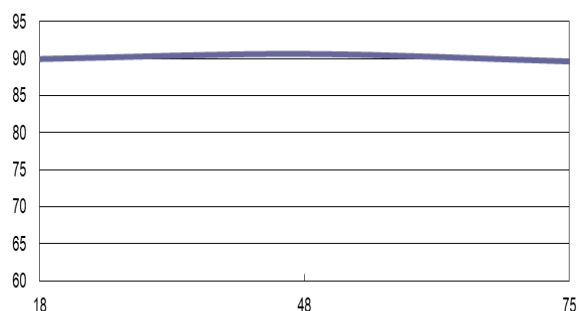


THL 30-4813WI

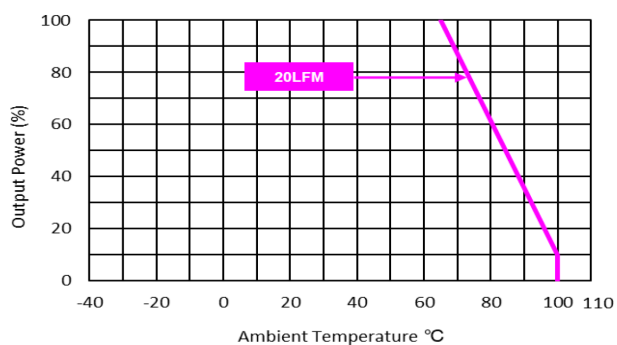
Efficiency versus Output Current



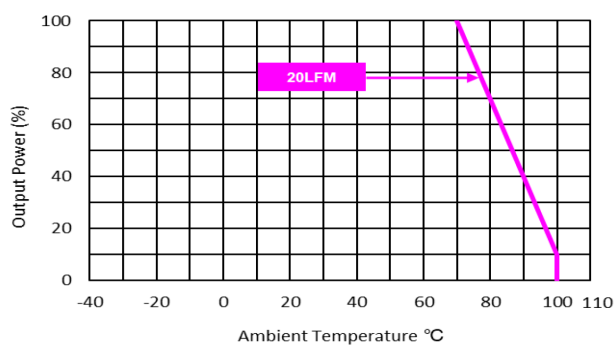
Efficiency versus Input Voltage



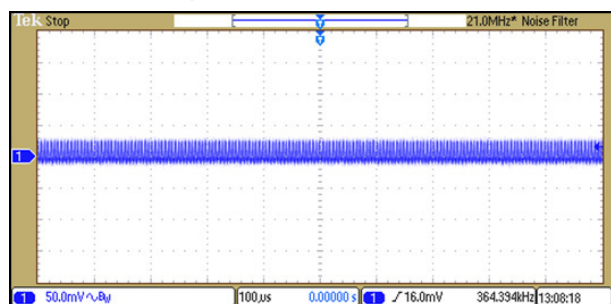
Derating Output versus Ambient Temperature without Heatsink



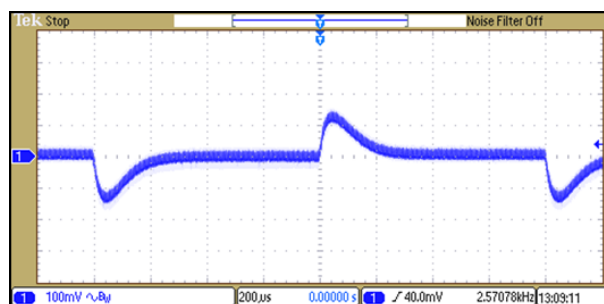
Derating Output versus Ambient Temperature with Heatsink THL-HS1



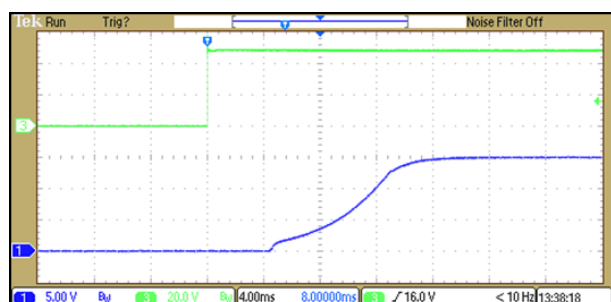
Typical Output Ripple and Noise at Full Load with external capacitor; see datasheet



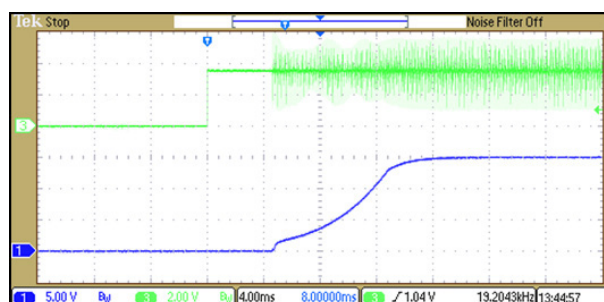
Transient Response to Dynamic Load Change (25%)



Typical Input/Output Start-Up Characteristic at Full Load

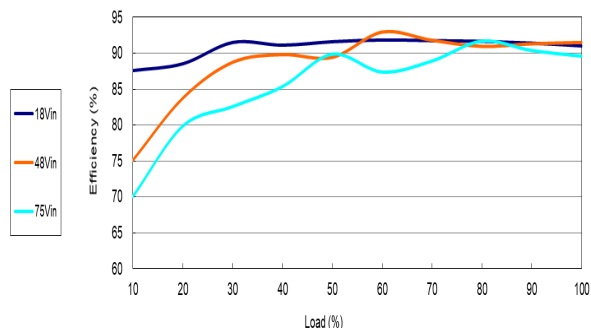


Typical Input/Output Start-Up Characteristic at Full Load with Remote On

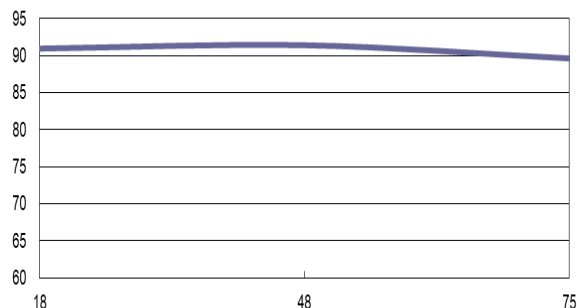


THL 30-4815WI

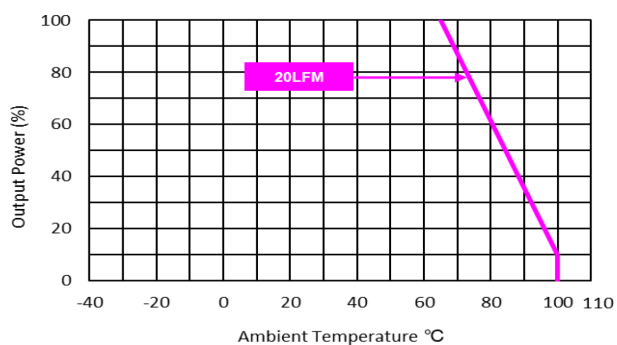
Efficiency versus Output Current



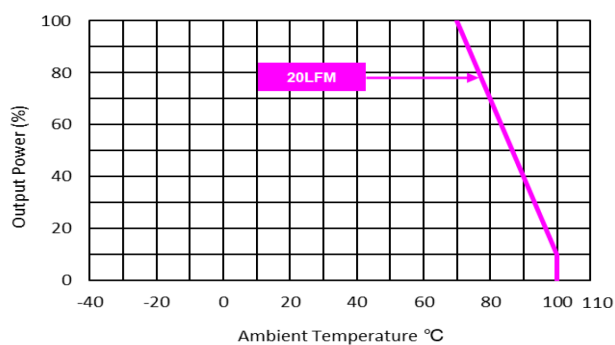
Efficiency versus Input Voltage



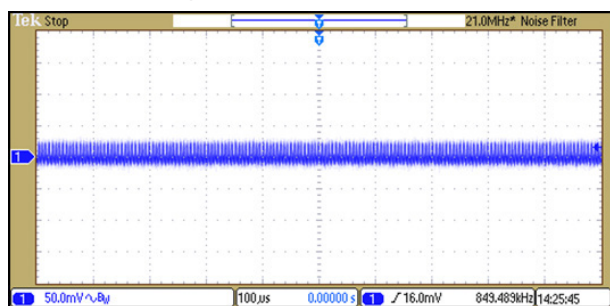
Derating Output versus Ambient Temperature without Heatsink



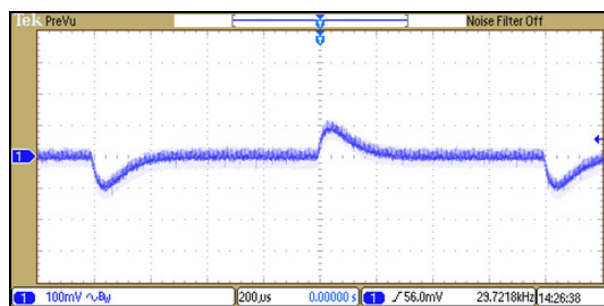
Derating Output versus Ambient Temperature with Heatsink THL-HS1



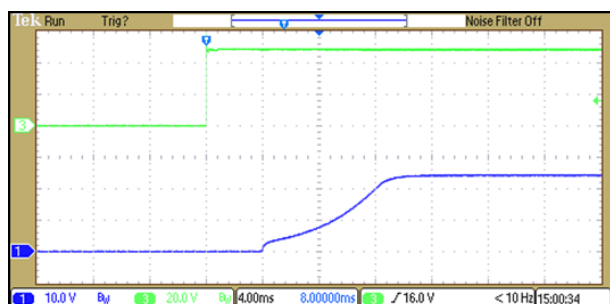
Typical Output Ripple and Noise at Full Load with external capacitor; see datasheet



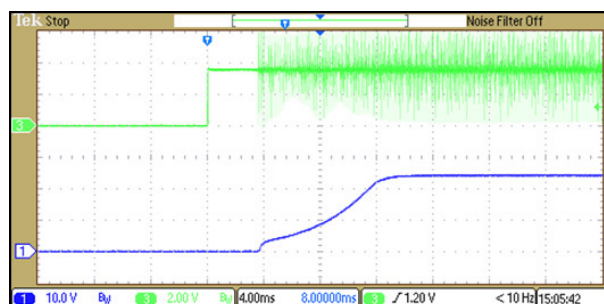
Transient Response to Dynamic Load Change (25%)



Typical Input/Output Start-Up Characteristic at Full Load

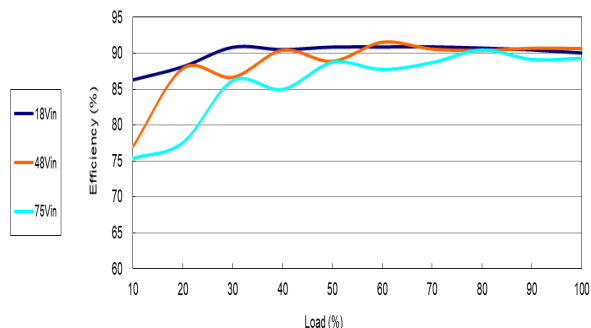


Typical Input/Output Start-Up Characteristic at Full Load with Remote On

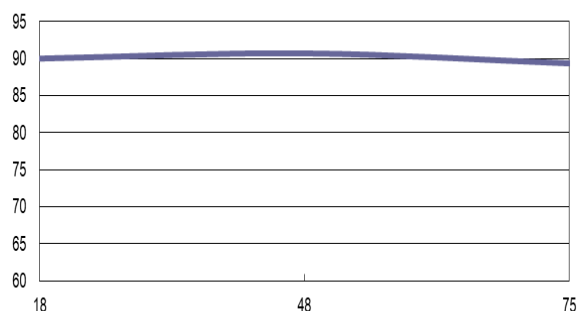


THL 30-4822WI

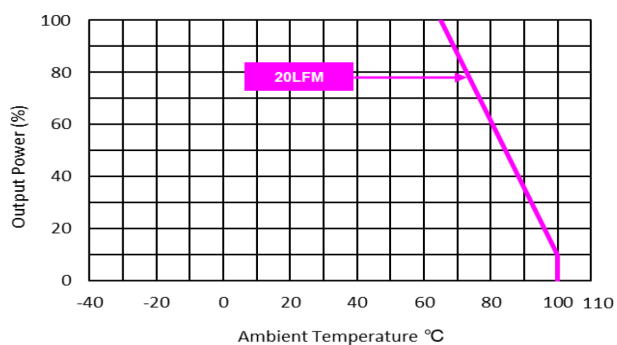
Efficiency versus Output Current



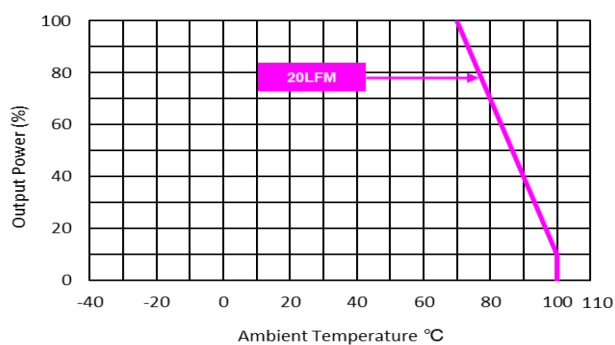
Efficiency versus Input Voltage



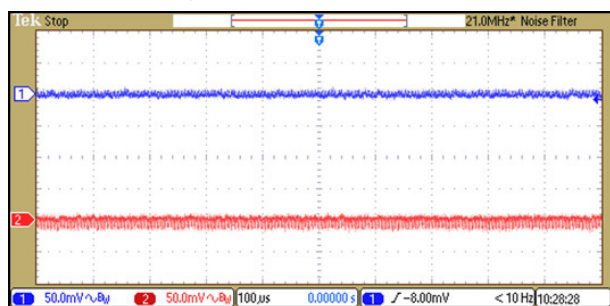
Derating Output versus Ambient Temperature without Heatsink



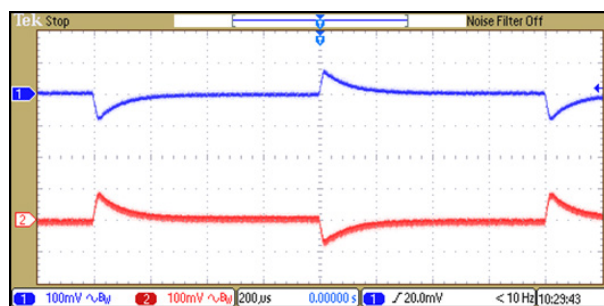
Derating Output versus Ambient Temperature with Heatsink THL-HS1



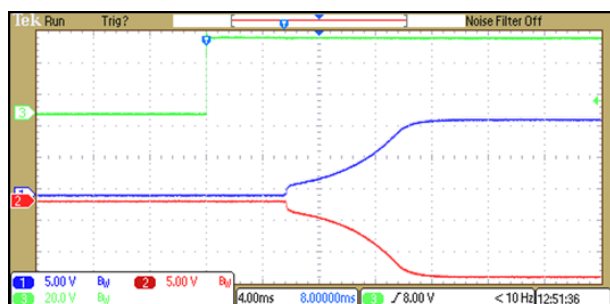
Typical Output Ripple and Noise at Full Load with external capacitor; see datasheet



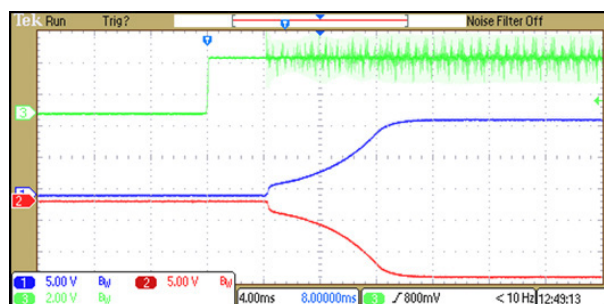
Transient Response to Dynamic Load Change (25%)



Typical Input/Output Start-Up Characteristic at Full Load

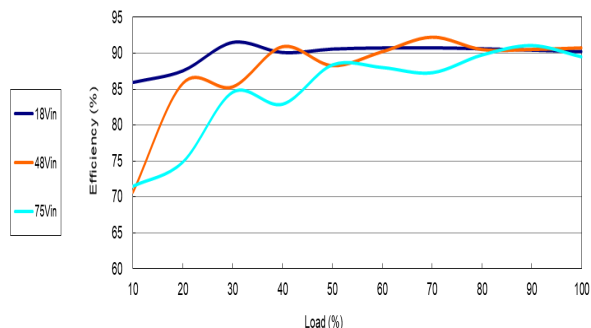


Typical Input/Output Start-Up Characteristic at Full Load with Remote On

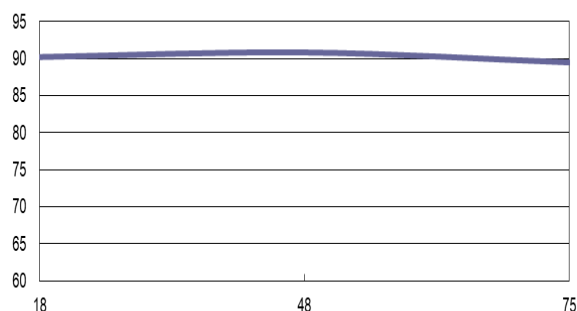


THL 30-4823WI

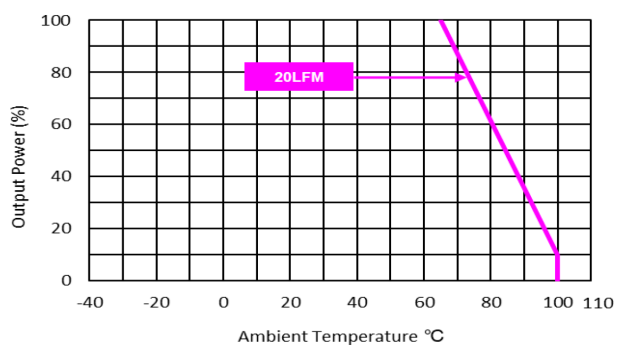
Efficiency versus Output Current



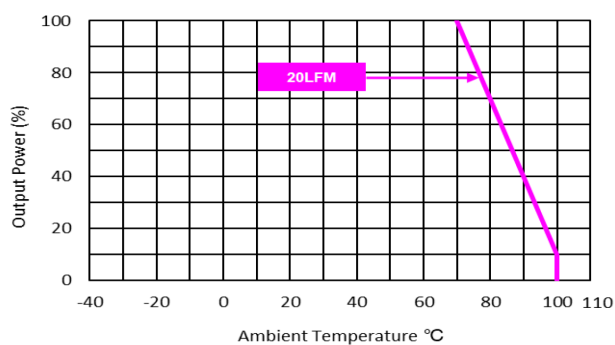
Efficiency versus Input Voltage



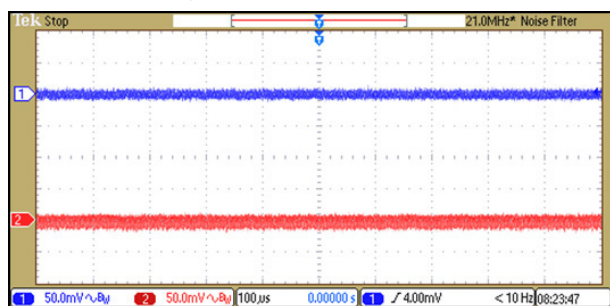
Derating Output versus Ambient Temperature without Heatsink



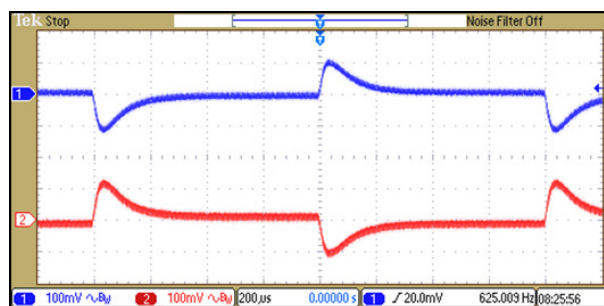
Derating Output versus Ambient Temperature with Heatsink THL-HS1



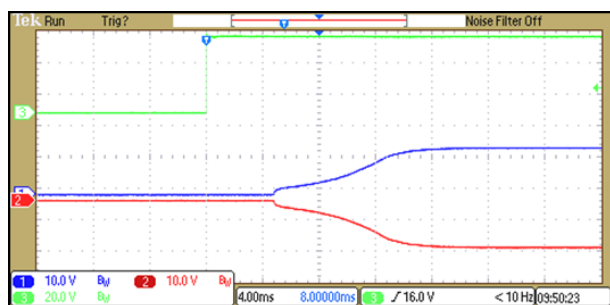
Typical Output Ripple and Noise at Full Load with external capacitor; see datasheet



Transient Response to Dynamic Load Change (25%)



Typical Input/Output Start-Up Characteristic at Full Load



Typical Input/Output Start-Up Characteristic at Full Load with Remote On

