

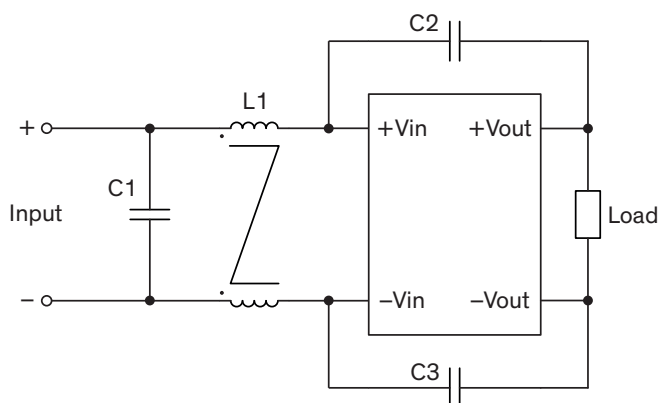
EMI Consideration

Suggested filter to comply with EN 55032 Conducted Emissions Class A limits

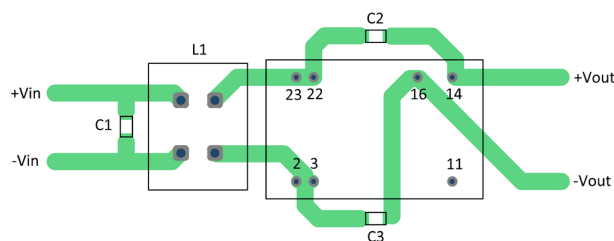
TEN 6N series fulfills EN 55032 Conducted Emissions Class A without external components.

Suggested filter to comply with EN 55032 Radiated Emissions Class A limits

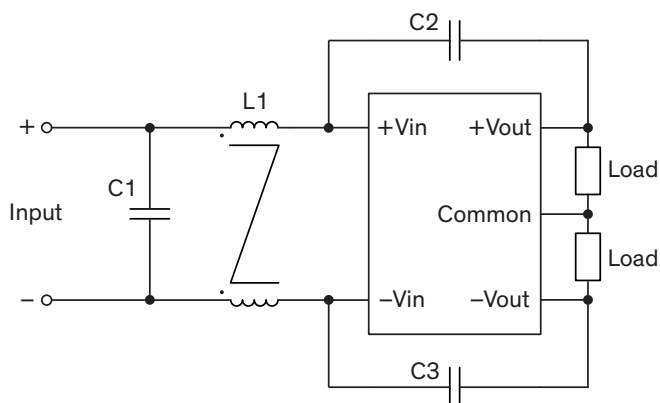
Single output models



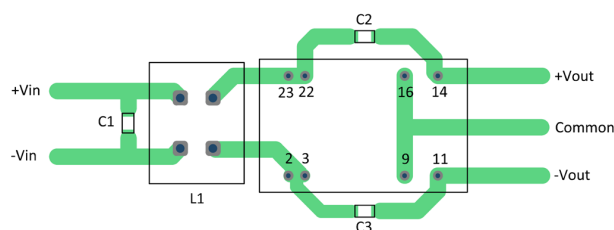
Layout suggestion Top View



Dual output models



Layout suggestion Top View



Suggested components to comply with EN 55032 Radiated Emissions Class A limits

Model	C1	L1	C2, C3
TEN 6-12xxN	47 μ F / 25 V / 1206 X5R	175 μ H / 10 A 74482210002	1.5 nF / 2 kV / 1206 X7R
TEN 6-24xxN	10 μ F / 50 V / 1206 X5R		
TEN 6-48xxN	2.2 μ F / 100 V / 1206 X7R		