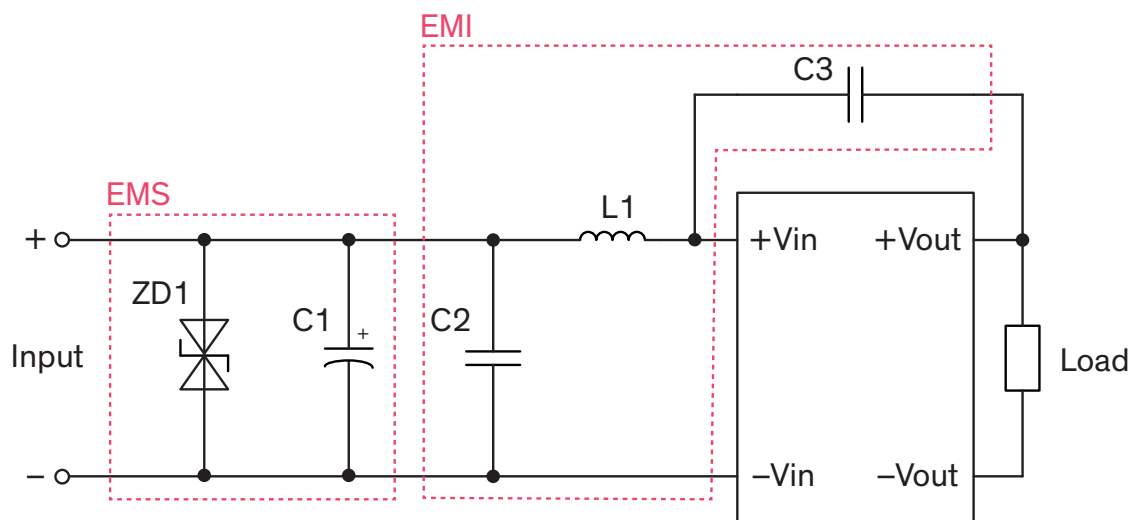


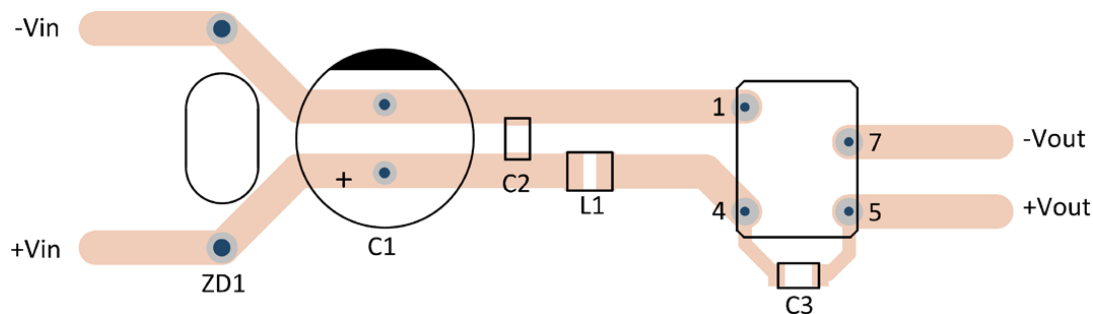
EMC Consideration

Suggested filter to comply with EN 55032 Conducted and Radiated Emissions Class A/B limits

Filter suggestion



PCB layout suggestion



Suggested components to comply with EN 55032 Conducted and Radiated Emissions Class A/B limits

Model	ZD1	C1	C2	L1	C3
TDU 1-05xx	1.5KE7.5CA (TVS diode)	1'500 µF / 10 V KZH	22 µF / 35 V 1206 X5R	3.3 µH / 0.58 A 1210 WE-LQ 744032003	330 pF / 2 kV 1206 X7R
TDU 1-12xx	1.5KE18CA (TVS diode)	560 µF / 35 V KZH		68 µH / 0.13 A 1210 WE-LQ 744032680	
TDU 1-24xx	1.5KE33CA (TVS diode)				